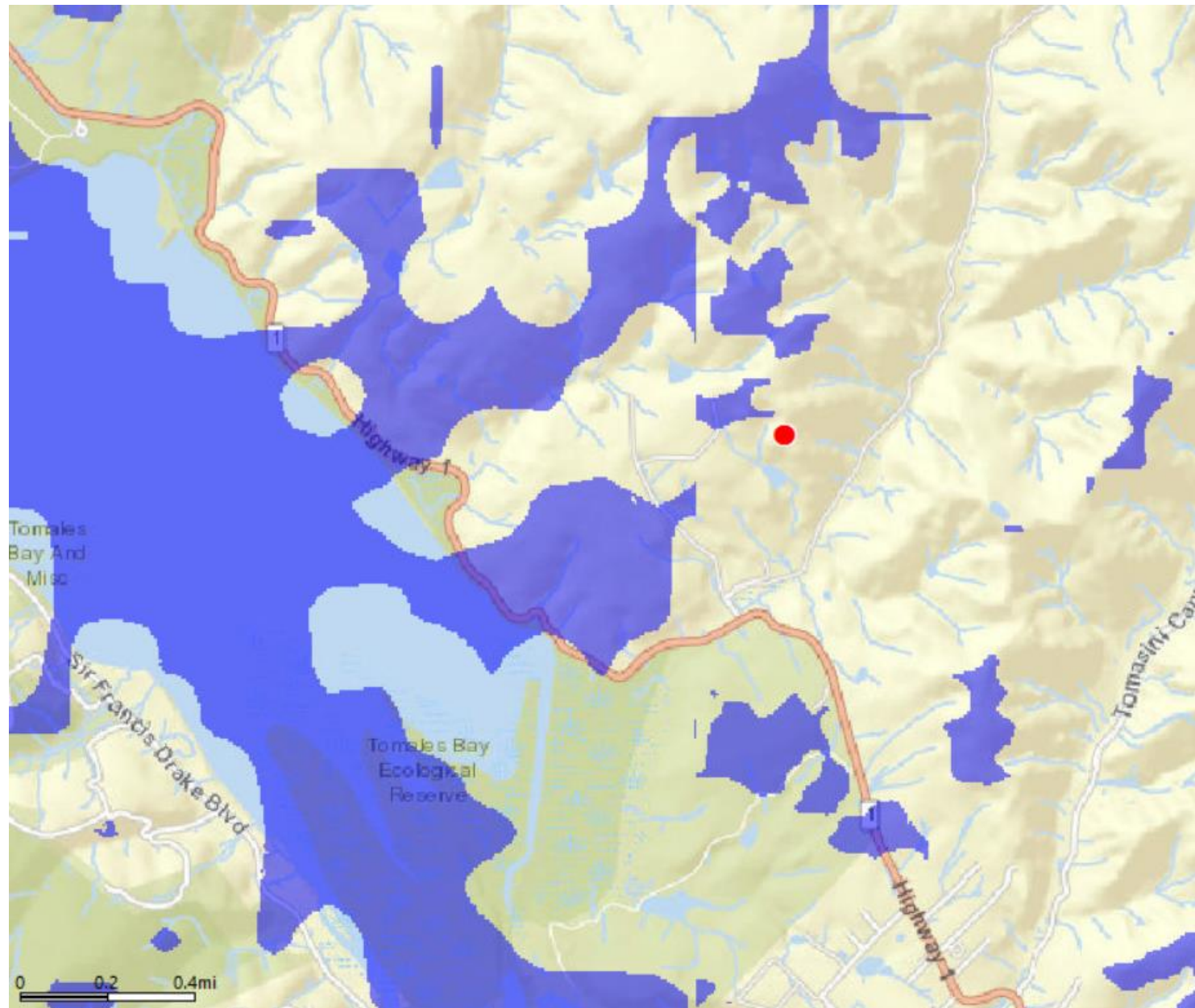
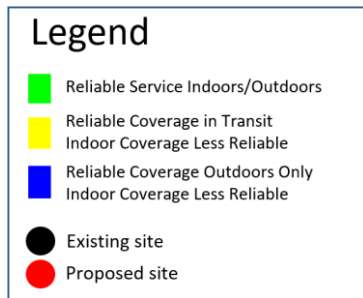
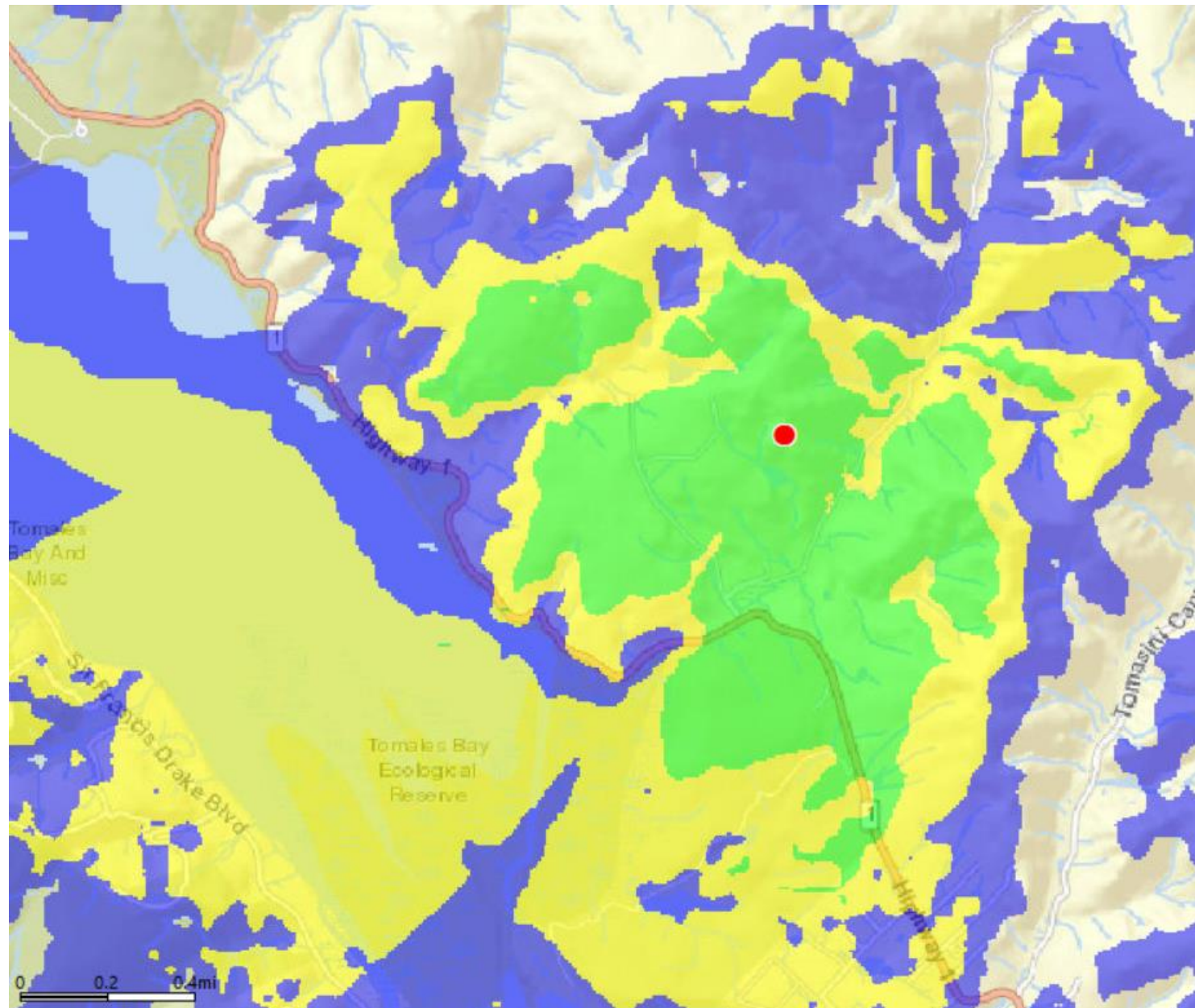


Existing Coverage



"AT&T PROPRIETARY -- This information constitutes confidential trade secrets and commercial or financial information owned by AT&T and is shared for Critical Infrastructure Protection purposes only. It is exempt from disclosure under the Freedom of Information Act (5 U.S.C. 552), Exemptions (b)(3)&(4), and its disclosure is prohibited under the Trade Secrets Act (18 U.S.C. 1905), the Critical Infrastructure Information Act of 2002, 6 U.S.C. § 133, and any State or local law requiring disclosure of information or records. This information must not be copied or distributed to others not agreed upon by AT&T, but in all events do not copy or distribute to such others without notification pursuant to Executive Order 12600."

Proposed Coverage CCL01088 centerline at 80 ft

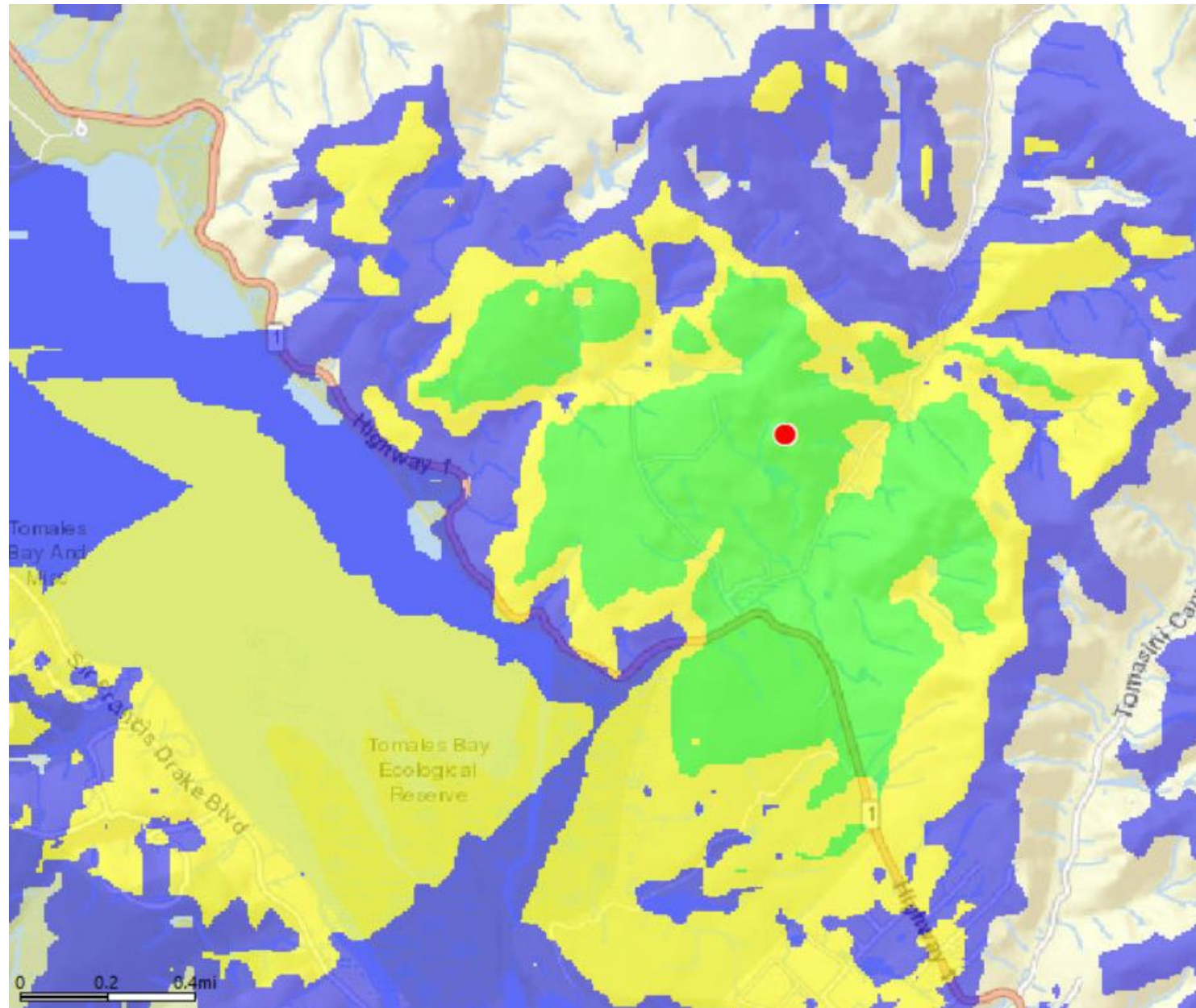


Legend

- Reliable Service Indoors/Outdoors
- Reliable Coverage in Transit
Indoor Coverage Less Reliable
- Reliable Coverage Outdoors Only
Indoor Coverage Less Reliable
- Existing site
- Proposed site

"AT&T PROPRIETARY -- This information constitutes confidential trade secrets and commercial or financial information owned by AT&T and is shared for Critical Infrastructure Protection purposes only. It is exempt from disclosure under the Freedom of Information Act (5 U.S.C. 552), Exemptions (b)(3)&(4), and its disclosure is prohibited under the Trade Secrets Act (18 U.S.C. 1905), the Critical Infrastructure Information Act of 2002, 6 U.S.C. § 133, and any State or local law requiring disclosure of information or records. This information must not be copied or distributed to others not agreed upon by AT&T, but in all events do not copy or distribute to such others without notification pursuant to Executive Order 12600."

Proposed Coverage CCL01088 centerline at 70 ft

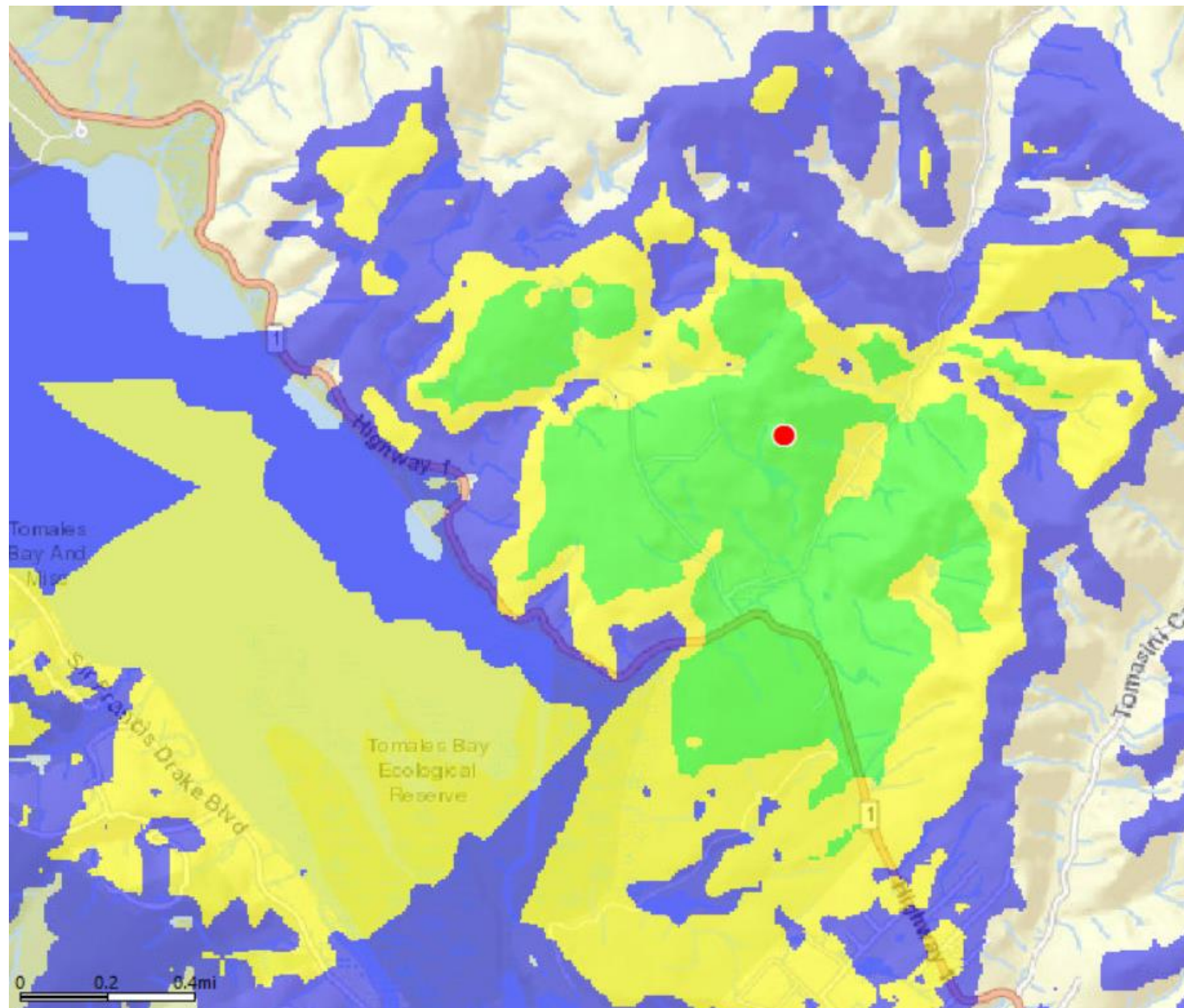
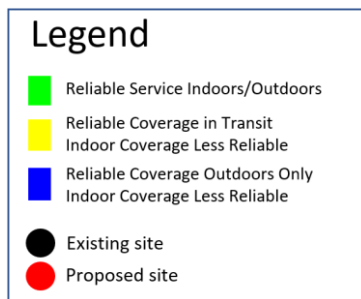


Legend

- Reliable Service Indoors/Outdoors
- Reliable Coverage in Transit
Indoor Coverage Less Reliable
- Reliable Coverage Outdoors Only
Indoor Coverage Less Reliable
- Existing site
- Proposed site

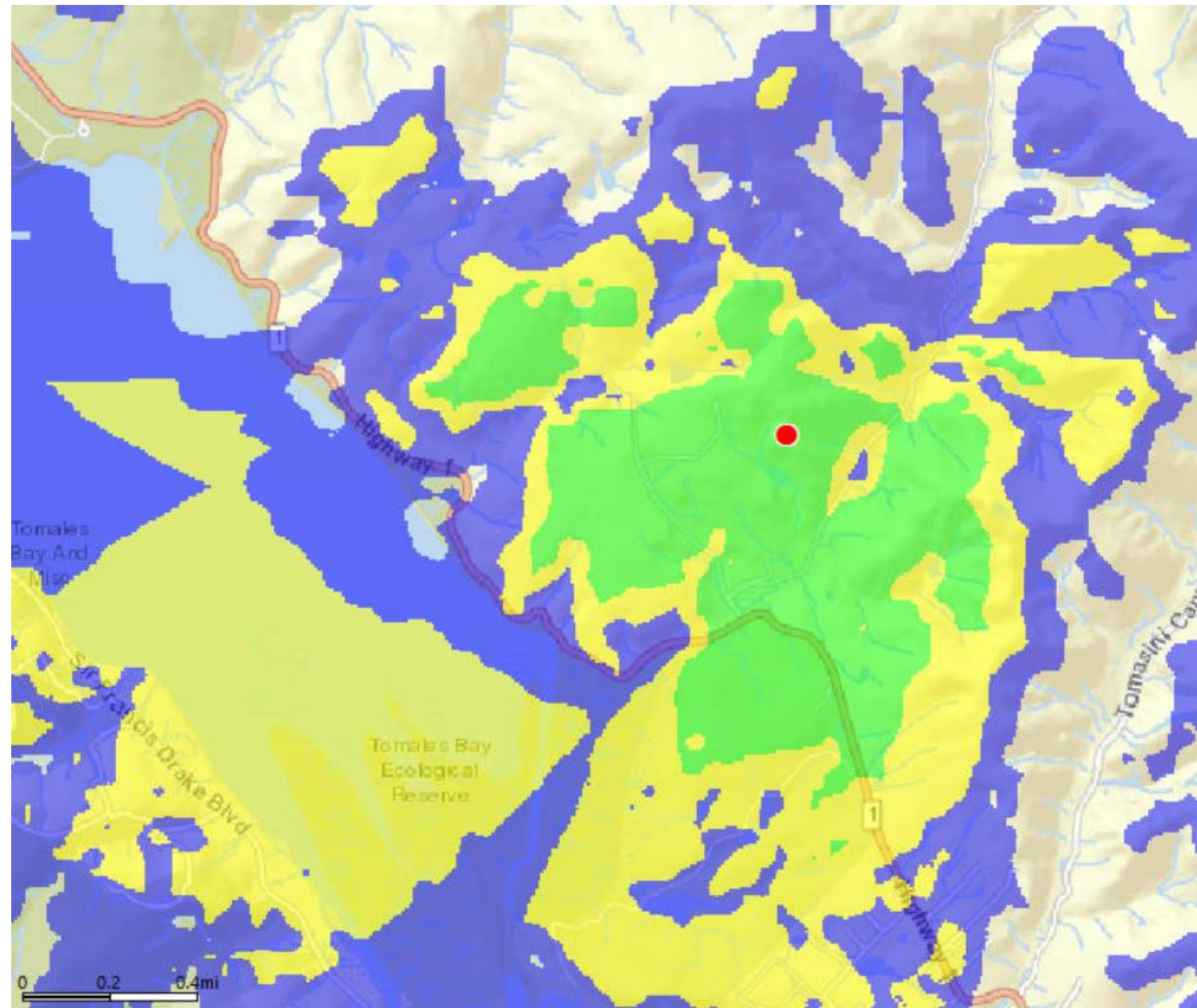
"AT&T PROPRIETARY -- This information constitutes confidential trade secrets and commercial or financial information owned by AT&T and is shared for Critical Infrastructure Protection purposes only. It is exempt from disclosure under the Freedom of Information Act (5 U.S.C. 552), Exemptions (b)(3)&(4), and its disclosure is prohibited under the Trade Secrets Act (18 U.S.C. 1905), the Critical Infrastructure Information Act of 2002, 6 U.S.C. § 133, and any State or local law requiring disclosure of information or records. This information must not be copied or distributed to others not agreed upon by AT&T, but in all events do not copy or distribute to such others without notification pursuant to Executive Order 12600."

Proposed Coverage CCL01088 centerline at 60 ft



"AT&T PROPRIETARY -- This information constitutes confidential trade secrets and commercial or financial information owned by AT&T and is shared for Critical Infrastructure Protection purposes only. It is exempt from disclosure under the Freedom of Information Act (5 U.S.C. 552), Exemptions (b)(3)&(4), and its disclosure is prohibited under the Trade Secrets Act (18 U.S.C. 1905), the Critical Infrastructure Information Act of 2002, 6 U.S.C. § 133, and any State or local law requiring disclosure of information or records. This information must not be copied or distributed to others not agreed upon by AT&T, but in all events do not copy or distribute to such others without notification pursuant to Executive Order 12600."

Proposed Coverage CCL01088 centerline at 50 ft



Legend

- Reliable Service Indoors/Outdoors
- Reliable Coverage in Transit
- Indoor Coverage Less Reliable
- Reliable Coverage Outdoors Only
- Indoor Coverage Less Reliable
- Existing site
- Proposed site

"AT&T PROPRIETARY -- This information constitutes confidential trade secrets and commercial or financial information owned by AT&T and is shared for Critical Infrastructure Protection purposes only. It is exempt from disclosure under the Freedom of Information Act (5 U.S.C. 552), Exemptions (b)(3)&(4), and its disclosure is prohibited under the Trade Secrets Act (18 U.S.C. 1905), the Critical Infrastructure Information Act of 2002, 6 U.S.C. § 133, and any State or local law requiring disclosure of information or records. This information must not be copied or distributed to others not agreed upon by AT&T, but in all events do not copy or distribute to such others without notification pursuant to Executive Order 12600."