



Wednesday, February 19, 2025

## Housing and Federal Grants Division 2024 - 2025 Application for Funding Community Development Block Grant Program

This application is for nonprofit organizations and government entities in Marin County, California who would like to apply for federal Community Development Block Grant program funds for Public Services or Community Infrastructure/Capital Improvements. Please refer to the [Application Guidelines](#) released on January 22, 2024 for detailed information about qualifications and application requirements. Applicants may use this [prep tool](#) for the long-form questions in order to save their responses and copy/paste into this application.

The deadline to apply is **5:00 p.m. Friday, February 16**. Applicants will receive a copy of their submitted application to the email address entered.

**Indicate type of project. If your project allows, you may apply under multiple categories. (See Application Guidelines for more information)**

Public Services (CDBG)

### Organization (Fiscal Sponsor) General Information

#### Organization (Fiscal Sponsor)/Agency Name

Marin YMCA

#### Mailing Address

1500 Los Gamos Drive  
San Rafael, California, 94903

#### Website (if applicable)

<https://www.ymcasf.org/location/marin-ymca/>

#### Organization DUNS#

007877146

#### Executive Director/CEO

Andrew Ward

#### Email Address

award@ymcasf.org

#### Phone Number

(415) 446-2101

### Project General Information

#### Program/Project Name

Expanding Affordable Childcare through YMCA Elementary-Aged Programs

**Program/Project Site Address**

1500 Los Gamos Drive  
San Rafael, California, 94903

**CDBG Funding Amount Requested (Minimum request amount: \$15,000)**

65000

**Application Contact Person**

Andrew Ward

**Title of Contact Person**

Sr. Executive Director

**Contact Email Address**

award@ymcasf.org

**Contact Phone Number**

(415) 446-2101

To determine if your project is located in a Special Flood Hazard Area as indicated by FEMA, visit [FEMA Flood Map Service Center](#). (Save a copy of the Dynamic Map and upload at the end of this application.)

**Is this project located in a Special Flood Hazard Area as indicated by FEMA?**

No

For CDBG Public Facilities/Improvements applications, if the project is located in a **Regulatory Floodway it is not eligible for funding**. Public Facilities/Improvements projects located in a Special Flood Hazard Area require flood insurance to qualify for funding.

**Project Specifics**

**Planning Areas Served: Indicate what geographic area(s) the requested funding will serve.**

Novato

San Rafael

County Other

**Is your organization receiving other County of Marin funding for this project?**

No

**Organizational Overview: Provide a brief description of your organization including mission, programs, number of clients served, etc.**

As part of the YMCA of San Francisco, the Marin YMCA 2030 Vision and mission is to build healthy, sustainable, and equitable communities for all generations where everyone can be, belong, and become. Our strategic priorities are to champion an accessible, connected, resilient, and just Bay Area; enhance individual, staff, family, and community health & wellbeing; open pathways to social and economic mobility; expand opportunities at all ages and life stages; and advance a safe, collaborative, and sustainable future.

Marin Y is currently focused on two key priorities. The first is providing affordable childcare for elementary-aged children through after-school and summer programs. The second priority is supporting the physical and social well-being of all ages and populations across the county through a range of programs/services.

Our branch serves 1600+ Marin residents daily & 6,000+ members via our health & wellness services of whom 3,500 are aged 60+. Approx. 30% of members of our Y facility on Los Gamos Drive qualify for financial assistance to meet our internal low-income verification metrics. Public perception often thinks of the Y as a gym, which is true yet limiting. Marin Y is a comprehensive community health resource that removes financial barriers to physical well-being supports as well as combats social isolation and enhances emotional and mental well-being. Exercise and community are at the heart of our branch. Older adults and Latinx populations are two of the largest demographics making up our membership. We also actively teach youth in Marin to swim through swimming lessons and water safety programming.

The focus of this grant request is addressing affordable childcare. Marin Y does this through programs that exist on 15 public school or community-based locations throughout the county. Marin YMCA childcare programs operate in West Marin, Novato, San Rafael, San Anselmo, and Fairfax. The afterschool and summer camp programs in Tomales, Pt. Reyes Station, and the Canal are 100% subsidized and thus free to qualifying families based on income criteria.

Currently, 1,141 elementary-aged students are enrolled in YMCA childcare programs in Marin County, with enrollment expected to exceed 1,500 next school year due to increased community demand. During the summer, 450-500 elementary-aged children participate in full-day YMCA summer camps.

In Novato, 587 elementary-aged students are enrolled in a YMCA after-school childcare program, with 211 (36%) qualifying for fully subsidized care based on income, and 56 (10%) who qualify for partial subsidies but need full support.

In San Rafael, 175 students are enrolled in a YMCA after-school childcare program, with 114 (65%) qualifying for fully subsidized care. The YMCA operates a program at the Al Boro Community Center in the Canal District, serving 76 students who qualify for fully subsidized enrollment, and 10 qualified for partial subsidies, who need full assistance.

In West Marin, 87 students currently receive fully subsidized childcare at YMCA programs in Tomales and West Marin Elementary schools.

The YMCA is dedicated to addressing the increasing childcare needs in Marin County, offering vital support for families and helping to build a stronger, healthier community for everyone.

**Project Description: Provide a detailed scope of work including services to be provided and/or development activities to be engaged. Describe how this project will benefit the community.**

This project will provide full subsidies for up to 76 families (over 300 unique program enrollments) with elementary students who currently receive partial subsidies. These students, identified by school principals and community advocates, will be able to enroll in YMCA school year and summer childcare programs in Novato, the Canal neighborhood, and other areas of San Rafael and West Marin. The families will be identified through local public-school partners. Currently, 76 elementary-age students (over 300 unique enrollments) in Novato and San Rafael need full subsidies, and we expect this number to grow as we enroll students for the 2025-2026 school year.

The Marin YMCA has expanded access for low-income families to affordable, year-round childcare across Marin County in the past 4 years. During summer months we provide 6 summer camp/childcare programs for all day care in Tomales, Pt. Reyes Station, the Canal, Novato, and San Anselmo. In partnership with our school districts in each area, 80% of the 500 youth in the summer camps receive fully subsidized access. This means free childcare for low-income families for 6 weeks during the summer. Beyond childcare, these elementary aged students are participating in an enrichment and emotional learning-based summer camp that is recreational, educational, and experience rich.

During the school year, we currently have 1,100 students receiving childcare after school serving working

families between the hours of 7:00 AM until school starts and then again from 2:00 pm through 6:00 pm. These programs are across all the previously named districts of Marin County. The Y is a leading national expert and trusted community partner for this work. Many other counties and cities provide extensive support through funding so that families have access to affordable childcare. Public funding for affordable childcare is scarce in Marin County.

There are numerous community benefits for low-income families having access to affordable childcare during the summer. For the county, a continuation of local economic sustainability is related to affordable childcare including industries: agricultural, restaurant, hospitality, and retail jobs. Parental well-being is nurtured when safe and developmentally focused care of their children is available. Summer Learning Loss is reduced when elementary-aged students are engaged in year-round learning. Social skills and emotional development continue during the summer. Summer camps are affordable childcare solutions, and the Y is the leading provider of this solution across the Marin County. Our camps are local, equity-driven, and available in the communities on campuses that are accessible to those who need them the most. Tomales, Pt. Reyes, Novato, and The Canal are four of the summer camp locations. There will also be a camp located in the Ross Valley School District.

**Which community priority does your project align with? (See Application Guidelines for descriptions) (check as many boxes as applicable)**

Children and Youth Services

**Describe how your project aligns with these priorities.**

This project directly aligns with the Children and Youth Services priority of this grant opportunity. The Y will create 76 new fully subsidized childcare spots for elementary-aged students from low-income families, identified by local school principals and community advocates.

These spots will be available in YMCA school year and summer camp programs located in Tomales, Pt. Reyes Station, Novato, San Rafael's Canal neighborhood, and Ross Valley.

West Marin and the Canal are recognized as areas of high need, while Novato and Ross Valley also have pockets of underserved communities where the Y programs are already in place. By investing in this project, Marin County will enhance access to affordable childcare through a proven, sustainable non-profit organization addressing countywide inequities.

The Marin Y's existing infrastructure minimizes any unforeseen additional costs, allowing this \$65K request to support our project that is ready to proceed and directly contribute to reducing the childcare waitlist in Marin, Novato, and San Rafael.

**Select HUD National Objective to be achieved with funding. Check all that apply.**

Activities benefiting low and moderate-income persons. (LMI)

Activities benefiting low and moderate area. (LMA)

**All projects funded are required to Affirmatively Further Fair Housing (AFFH) which is defined as taking "meaningful actions, in addition to combating discrimination, that overcome patterns of segregation and foster inclusive communities free from barriers that restrict access to opportunity based on protected characteristics."**

**How will this project Affirmatively Further Fair Housing?**

This project increases subsidized childcare for families who live and work in low-income areas of Marin County. Affordable childcare allows parents and families to prioritize using their limited income for rent and housing instead of childcare. The types of programs this funding opens access to have traditionally only been available to more affluent homeowner areas of Marin County. The location of the Marin YMCA

elementary aged childcare centers increases access to the low-income areas of West Marin, Novato and San Rafael. Specifically, Tomales Elementary School and West Marin Elementary School. In Novato, Lu Sutton, Hamilton, and Loma Verde Elementary Schools and in San Rafael, the Canal Neighborhood where the Al Boro Community Center where YMCA childcare program exists.

The Marin YMCA already practices and delivers on criteria for Affirmative Marketing Plans. Emails, flyers, and other written communications are accessible for both English and Spanish speaking communities. We collaborate directly with our school partners via community advocates and school administrations to communicate and enroll students in our programs. We have bilingual staff in all these areas for direct verbal communication on school campuses and bilingual staff available for communication via phone.

The only challenge we encounter is meeting the high demand for additional subsidies for those not receiving full support, and managing waitlists at locations with higher enrollment needs than our current staffing allows. Staffing gaps are typically addressed within 6-8 weeks.

**All projects funded are required to conduct Affirmative Marketing. For more information about affirmative marketing, visit the [Marin County Federal Grants website](#) and scroll down to the Affirmative Marketing panel.**

Refer to the [Current Marin County Income Limits](#) to determine income level for use in the table below.

**Approximately how many moderate, low, very low and extremely low-income persons will directly benefit from the program/project? Projects that support low-income persons will be prioritized.**

	Number
Moderate Income	0
Low Income	0
Very Low Income	76
Extremely Low Income	0
<b>TOTAL</b>	<b>76</b>

**Notes or clarifying information on the unit count:**

This program will provide subsidized childcare to families who qualify for free and reduced lunch programs in the Marin County Elementary school system.

**How does your organization verify client income? Income verification is required except if the client is presumed benefit by HUD. Presumed benefit applies to abused children, battered spouses, the elderly, adult persons with serious disabilities, the homeless, illiterate persons, and migrant farm workers.**

We have an established income verification process that is monitored and audited by various stakeholders. Free and reduced lunch qualifying families are the priority for the 100% subsidized spots and additional financial assistance is made available for low-income families who do not meet the free and reduced lunch criteria. This portion of clients referred to us directly through the school district and local school leadership partners.

The Marin YMCA income internal verification process includes three primary steps. The first step is a case-by-case conversation to identify need. The second step is a review of income qualification documents which may include and is not limited to: bank statements, tax returns, social security, disability

documentation, letters of verification or support, and other values -based tools based on trust and truth telling. We recognize documenting income can be a vulnerable experience for undocumented communities and we have tools to support this. Our internal scale for determining financial assistance is based on living wage income for San Francisco. This regularly means that more families can qualify compared to other statistical cost of living measures. The third step is a random quarterly audit in which individuals and families may be asked to complete as an additional verification step.

**Estimate the demographics of moderate, low, very low, and extremely low-income persons who will directly benefit from the program/project. The total number of beneficiaries should equal the total in the previous questions.**

	Total Number of Persons	Number Identifying as Hispanic
American Indian or Alaskan Native		
Asian		
Black or African American	7	
Native Hawaiian or Other Pacific Islander		
White		
American Indian and White		
Asian and White		
Black and White		
American Indian and Black		
Multi-Racial	11	58
<b>TOTAL</b>	<b>18</b>	<b>58</b>

**Total Number of Persons (Must equal total identified under income level)**

18

**Total Number Identifying as Hispanic**

58

**Female-Headed Households (out of above total)**

0

**Persons with Disabilities (out of above total)**

0

**Notes or clarifying information on the unit count:**

Our estimates are based on limited demographic data from the current YMCA youth program enrollment. We are unable to provide specific information on female-headed or persons with disabilities-headed households.

## **PROJECT MANAGEMENT & FINANCIAL DATA**

**If your project or organization was funded previously, list past project(s), goals, and accomplishments/activities.**

Our previous funding request was for \$30,000 to create up to 50 fully subsidized enrollment spots for elementary students, as identified by principals and community advocates. The goal was to provide these spots for YMCA school year and summer childcare programs, primarily in Novato, the Canal neighborhood,

and parts of San Rafael and West Marin.

With the awarded funding of \$23,000, we were able to partially subsidize over double the goal (129 unique enrollment subsidies) for our various afterschool and summer camp program within the first 5 months of the grant period. We know that there are over double those 129 student enrollment subsidies and families that could greatly benefit from the security of continued subsidization through both the remainder of this year and in future years.

**If your agency has remaining funds previously approved, please describe the timeline for expending the fund balance.**

The Marin YMCA received \$23,000 from the County for 2024 federal Community Development Block Grant program for Public Services. The funds were fully expended by December 2024, five months into the grant period.

**Describe your organization's experience with administering grants and specifically federal grants.**

The Marin YMCA is a branch of YMCA of San Francisco which has held, administered, and implemented more than 200 government contracts for the last three fiscal years. Most are with the City and County of San Francisco. Others are with San Mateo County and Marin County. San Francisco contracts are held with the Human Services Agency, San Francisco Department of Childhood (SFDEC), the San Francisco Department of Public Health (DPH), Department of Children Youth & Families (DCYF), San Francisco Unified School District (SFUSD), San Francisco Mayor's Office for Housing and Community Development (MOHCD), and the San Francisco Office of Economic & Workforce Development (OEWD). Services provided for the City and County of San Francisco encompass the breath of programming for the Y, including active older adults, family support, youth development, workforce development, service connection, and wellness programming at HOPE SF sites. Our state funding from the California Department of Community Services and Development is the CDBG funding provided us as San Francisco's Community Action Agency, tasked with alleviating poverty. City and County contracts are relevant since we offer referrals and linkages for wrap-around social services as needed to other Y programs or those offered by other neighborhood organizations.

The YMCA of San Francisco has and continues to execute public and private contracts successfully. The YMCA of San Francisco has not neither failed nor refused to complete any contracts. The YMCA is in full compliance with program and fiscal monitoring. There is no litigation pending in connection with any contract or grant.

**Describe who will supervise and manage the project and their past experience with project management.**

This program is supervised and managed by a proven and tenured team of Youth Development professionals at the Marin YMCA. This team is led by Andrew Ward and Torrey Kelly. Andrew is a 20-year non-profit professional who currently serves as the Senior Executive Director of the Marin YMCA. He is a mostly life-long Marin resident who has led and executed similar projects in San Francisco. Torrey Kelly is also a 20-year-old non-profit professional who has led youth programs in Marin County during her entire career with the YMCA. Torrey is the primary relationship and contract holder for the Y's partnerships with the various school districts in Marin County. Torrey developed and led many Covid era emergency response childcare initiatives both for the Y and the County that opened the sustainable pathways for affordable childcare that currently exist. Both leaders are highly experienced with project management, grant fidelity, and outcome-based programs.

**Describe any recent or upcoming leadership transitions.**

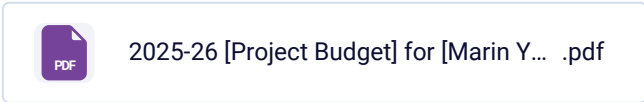
No current leadership transitions at the Marin YMCA. No significant changes are expected.

**Describe any flexibility regarding your projects start/completion date.**

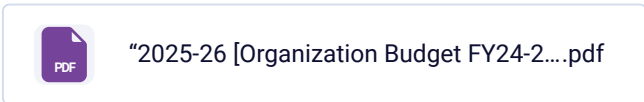
This project aims to utilize the funds starting the summer of 2025 and/or the school year and summer of 2026 depending on when they are made available to operationalize. These funds will be channeled to support existing childcare waitlist demands and thus spent quickly once received. The only potential hinderance would be limited staffing to meet waitlist demands. Current staffing gaps are solved within 6-8 weeks on average.

**Required Attachments:**

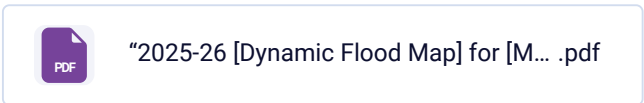
**Attach Project Budget: Complete the project budget template provided and submit along with application. If you have a project budget that provides the information requested in the template, you may submit that in-lieu of the template. Please note: the project budget should reflect the total cost of the project NOT just the CDBG request.**



**Attach Organization Budget: : Upload your organization or fiscal sponsors annual budget.**



**Attach Dynamic Flood Map**



**Submission**

Please review your responses above for accuracy.

**Name and Title of person completing this application.**

Cyndi Kahn, Director of Institutional Giving

**By checking this box**

I hereby certify that the information in this application is true and accurate to the best of my knowledge.

**Project Budget Template**

<b>Organization Name:</b> Marin YMCA
<b>Project Title:</b> Expand Scholarship Funding for Affordable Childcare

Date: 18-Feb-25

INCOME:	County NOFA Request	Other Funding Sources	In Kind
<b><u>Committed</u></b>			
<b>Foundations:</b>			
<i>(Add rows)</i>			
<b>Government:</b>			
<i>(Add rows)</i>			
<b>Corporations:</b>			
<i>(Add rows)</i>			
<b>Individual Contributions: (list total):</b>			
<b>Earned Income:</b>			
<i>(Add rows)</i>			
<b>Other (specify):</b>			
<i>(Add rows)</i>			
<b>Subtotal, Committed Income</b>		0	0
<b><u>Uncommitted</u></b>			
<b>Other (specify):</b>			
<b>Federal Grants Request</b>	65,000		
<b>Other Foundations:</b>			
<i>(Add rows to list other Foundations)</i>			
<b>Government:</b>			
<i>(Add rows to list other Government agencies)</i>			
<b>Corporations:</b>			
<i>(Add rows to list other corporations)</i>			
<b>Individual Contributions:</b>			
<b>Subtotal, Uncommitted Income</b>		0	0
<b>Other</b>			
<b>Earned Income:</b>			
<i>(Add rows)</i>			
<b>Subtotal, Earned Income</b>		0	
<b>Grand Total Income</b>	65000	0	0

EXPENSES (Add rows to list other expenses)	County NOFA Request	Other Funding Sources	In Kind
<b>Personnel Expenses</b>			

Executive Director (% FTE: ____)				650
Program Director (% FTE: ____)				783
<i>Program staff</i>				1182
Benefits (@ %: _____)				350
<b>Subtotal Salaries and Benefits</b>			0	2965
<b>Contracted Services</b>				
Professional Fees				
Project Consultant				
<i>(Add rows to list other contracted expenses)</i>				
<b>Subtotal Contracted Services</b>	0		0	0
<b>Direct Project Related Expenses</b>				
Rent				
Utilities				
Supplies	1500			
Equipment				
direct subsidy to families	63,000			
Professional Development				
Marketing	500			250
<b>Subtotal, Direct Project Related Expenses</b>	65000		0	3215
<b>General Development</b>				
Electrical				
Plumbing				
Roof Replacement				
Painting				
General Construction Labor				
Materials				
<i>(Add rows to list other specific project expenses)</i>				
<b>Subtotal, Direct Project Related Expenses</b>	0		0	0
<b>Indirect Expense - specify % in column A below (must be HUD approved)</b>				
<b>Fiscal Sponsorship Fee (specify % in column A below)</b>				
<b>Grand Total All Expenses</b>	\$ 65,000.00		\$ -	\$ 3,215.00

Marin YMCA Operating Budget 2024-2025

Branch ↑	Revenue/Expense ↑	Account Summary Group ↑	Budget
76 Marin	Revenue	01 - Contributions	\$189,998.00
		10 - Grants	\$2,026,200.30
		11 - Membership Dues	\$4,845,675.00
		13 - Program Fees	\$4,999,609.39
		14 - Member Services	\$7,380.00
		15 - Investment Returns	\$0.00
		16 - Miscellaneous	\$0.00
		19 - Other Changes in Net Assets	\$14,707.68
		<b>Subtotal</b>	\$12,083,570.37
	Expense	21 - Salaries and Wages	-\$4,795,305.00
		22 - Employee Benefits	-\$811,106.54
		23 - Payroll Taxes	-\$445,293.72
		24 - Professional Services	-\$90,735.04
		25 - Supplies	-\$516,256.26
		26 - Telecommunications	-\$97,945.98
		27 - Postage	-\$900.00
		28 - Occupancy	-\$1,020,306.04
		29 - Equipment	-\$105,131.28
		31 - Printing, Promotions	-\$4,800.00
		32 - Travel, Transportation	-\$57,636.62
		33 - Conferences, Training	-\$37,341.00
		34 - Campaign Expenses	\$0.00
		35 - Membership Dues Expense	-\$75,206.00
		37 - Financing Costs	-\$125,958.96
		38 - Insurance	-\$50,715.00
		39 - Miscellaneous Expense	-\$69,285.60
		48 - Intra-Y Cost Allocations	-\$1,698,352.42
		54 - Intercompany accounts	-\$1,073,070.90
	<b>Subtotal</b>	-\$11,075,346.36	
<b>Subtotal</b>	\$1,008,224.01		
<b>Total</b>	\$1,008,224.01		

# National Flood Hazard Layer FIRMette

122°32'51"W 38°1'13"N



## Legend

SEE FIS REPORT FOR DETAILED LEGEND AND INDEX MAP FOR FIRM PANEL LAYOUT

**SPECIAL FLOOD HAZARD AREAS**



Without Base Flood Elevation (BFE)  
Zone A, V, A99  
With BFE or Depth Zone AE, AO, AH, VE, AR  
Regulatory Floodway

**OTHER AREAS OF FLOOD HAZARD**



0.2% Annual Chance Flood Hazard, Areas of 1% annual chance flood with average depth less than one foot or with drainage areas of less than one square mile Zone X  
Future Conditions 1% Annual Chance Flood Hazard Zone X  
Area with Reduced Flood Risk due to Levee. See Notes. Zone X  
Area with Flood Risk due to Levee Zone D

**OTHER AREAS**



NO SCREEN Zone X  
Effective LOMRs Zone X  
Area of Undetermined Flood Hazard Zone D

**GENERAL STRUCTURES**



Channel, Culvert, or Storm Sewer  
Levee, Dike, or Floodwall

**OTHER FEATURES**



Cross Sections with 1% Annual Chance Water Surface Elevation  
Coastal Transect  
Base Flood Elevation Line (BFE)  
Limit of Study  
Jurisdiction Boundary  
Coastal Transect Baseline  
Profile Baseline  
Hydrographic Feature

**MAP PANELS**



Digital Data Available  
No Digital Data Available  
Unmapped

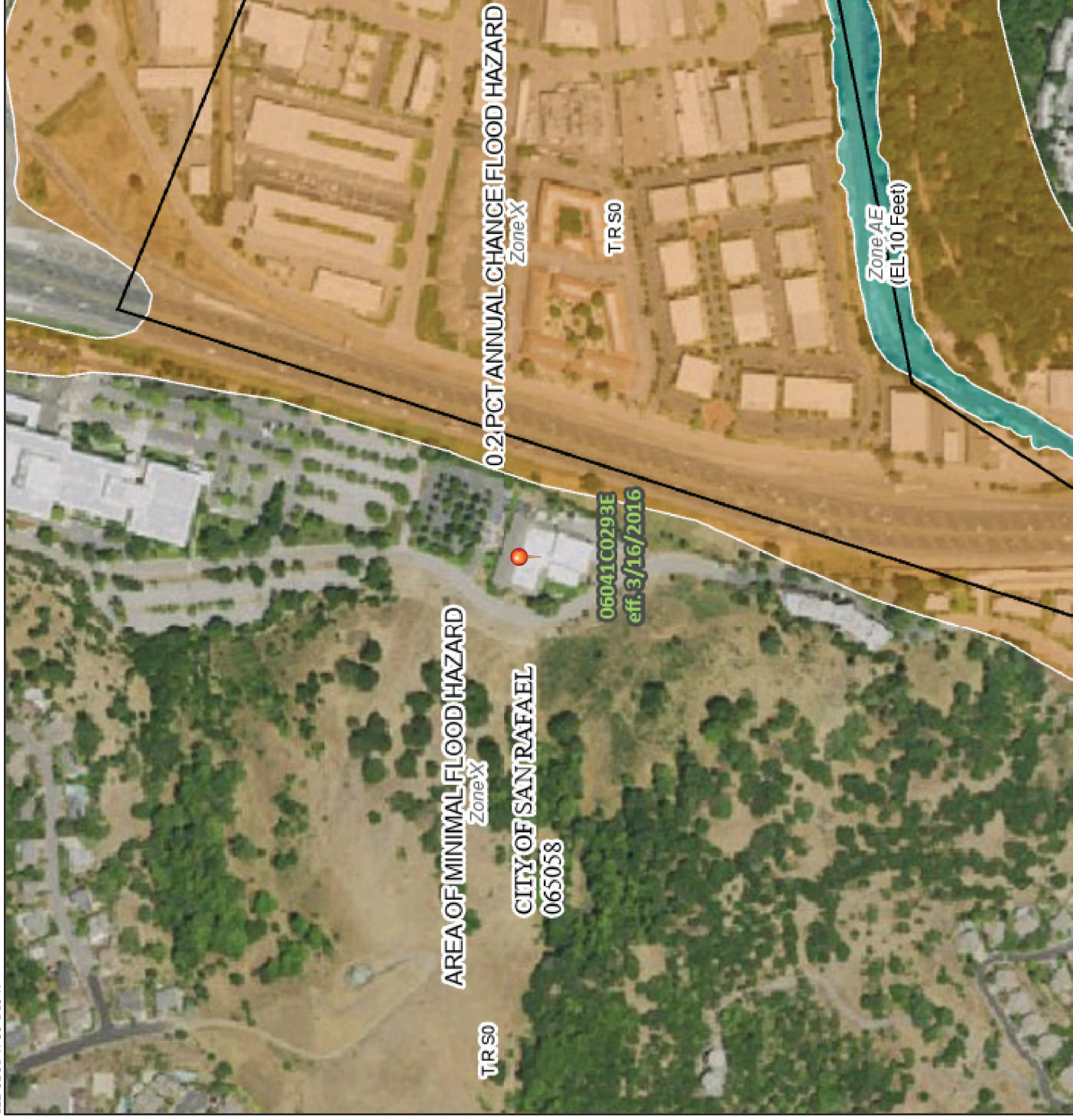


The pin displayed on the map is an approximate point selected by the user and does not represent an authoritative property location.

This map complies with FEMA's standards for the use of digital flood maps if it is not void as described below. The basemap shown complies with FEMA's basemap accuracy standards

The flood hazard information is derived directly from the authoritative NFHL web services provided by FEMA. This map was exported on 1/24/2025 at 6:51 PM and does not reflect changes or amendments subsequent to this date and time. The NFHL and effective information may change or become superseded by new data over time.

This map image is void if the one or more of the following map elements do not appear: basemap imagery, flood zone labels, legend, scale bar, map creation date, community identifiers, FIRM panel number, and FIRM effective date. Map images for unmapped and unmodernized areas cannot be used for regulatory purposes.



122°32'13"W 38°0'44"N