



Tuesday, February 18, 2025

Housing and Federal Grants Division 2024 - 2025 Application for Funding Community Development Block Grant Program

This application is for nonprofit organizations and government entities in Marin County, California who would like to apply for federal Community Development Block Grant program funds for Public Services or Community Infrastructure/Capital Improvements. Please refer to the [Application Guidelines](#) released on January 22, 2024 for detailed information about qualifications and application requirements. Applicants may use this [prep tool](#) for the long-form questions in order to save their responses and copy/paste into this application.

The deadline to apply is **5:00 p.m. Friday, February 16**. Applicants will receive a copy of their submitted application to the email address entered.

Indicate type of project. If your project allows, you may apply under multiple categories. (See Application Guidelines for more information)

Public Services (CDBG)

Organization (Fiscal Sponsor) General Information

Organization (Fiscal Sponsor)/Agency Name

Performing Stars of Marin

Mailing Address

271 Drake Avenue
Marin City, California, 94965

Website (if applicable)

www.performingstars.org

Executive Director/CEO

Felecia Gaston

Email Address

performingstars@sbcglobal.net

Phone Number

(415) 637-0563

Project General Information

Program/Project Name

Youth Afterschool and Summer Enrichment Programming

Program/Project Site Address

271 Drake Ave
Marin City, California, 94965

CDBG Funding Amount Requested (Minimum request amount: \$15,000)

20000

Application Contact Person

Felecia Gaston

Title of Contact Person

Executive Director

Contact Email Address

performingstars@sbcglobal.net

Contact Phone Number

(415) 637-0563

To determine if your project is located in a Special Flood Hazard Area as indicated by FEMA, visit [FEMA Flood Map Service Center](#). (Save a copy of the Dynamic Map and upload at the end of this application.)

Is this project located in a Special Flood Hazard Area as indicated by FEMA?

Yes

For CDBG Public Facilities/Improvements applications, if the project is located in a **Regulatory Floodway it is not eligible for funding**. Public Facilities/Improvements projects located in a Special Flood Hazard Area require flood insurance to qualify for funding.

Project Specifics

Planning Areas Served: Indicate what geographic area(s) the requested funding will serve.

County Other

Is your organization receiving other County of Marin funding for this project?

No

Organizational Overview: Provide a brief description of your organization including mission, programs, number of clients served, etc.

Performing Stars transforms the lives of low-income multicultural kids, families, and communities across Marin. We believe that everyone—regardless of age, race, or income—deserves an opportunity to “reach for the stars.”

While celebrating Marin City’s unique Bay Area legacy, we serve the entire county of Marin with youth arts and enrichment programs, historical, cultural, and civic engagement opportunities, and critical safety net support for the whole family. With our comprehensive programs and services, we’re a community hub where people can gather together, learn together, and thrive together.

At the heart of our work is a commitment to breaking cycles of exclusion. Too often, children in Marin’s most under-resourced communities, particularly those in Marin City and San Rafael’s Canal District, grow

up without access to arts, leadership training, or career exploration opportunities. Performing Stars fills that gap by offering year-round afterschool and summer programs that connect young people to experiences that spark their imagination and develop their talents. Whether it's a dance class that ignites self-expression, a civic leadership program that empowers students to find their voice or a scholarship that allows a child to attend a prestigious summer arts camp, our goal is the same: to ensure that the young people we serve see a future in which they belong and can thrive.

Beyond direct programming, Performing Stars connects youth with external scholarships and opportunities at institutions such as the Marin Ballet, Marin Shakespeare Company, and Stapleton School of the Performing Arts. Additionally, we work with county partners to secure summer camp scholarships. This past summer, our youth fulfilled 179 scholarships.

Each year, Performing Stars serves approximately 150 youth, but our impact extends far beyond numbers. Many of our students stay with us for years—some for up to a decade—growing from participants in our youth programming to mentors and young leaders who contribute back to their communities. Over time, their engagement translates into more than just hours spent in enrichment activities; it becomes the foundation for lifelong confidence, academic success, and career readiness. Since our inception, we have served approximately 3,500 youth. Of these, 99% have graduated from high school, enrolled in vocational training, or secured employment.

Project Description: Provide a detailed scope of work including services to be provided and/or development activities to be engaged. Describe how this project will benefit the community.

Through this grant, we seek funding to continue and expand our afterschool and summer enrichment programs. These programs give low-income youth access to transformative experiences that nurture creativity, leadership, and personal development, ensuring that the children of Marin City and other underserved communities do not miss out on critical opportunities due to financial hardship. With funding support, we will expand our programming to serve more children while enhancing accessibility through transportation, nutrition support, and financial assistance for programs.

During the school year, our afterschool programs offer a wide variety of activities, including modern dance, praise dance, gardening, eco-arts, and baton twirling, in addition to leadership training and civic education. These activities do more than entertain; they equip students with discipline, teamwork, and a sense of identity. They also create a safe and enriching environment during critical after-school hours when working families need support the most.

In the summer, Performing Stars opens even more doors. We provide scholarships that allow our youth to attend prestigious programs such as Marin Ballet, Marin Shakespeare Company, NatureBridge's Coastal Camp, and the Dominican University Summer Art Project. These opportunities, which might otherwise be financially unattainable, introduce students to new worlds, expand their networks, and broaden their ambitions. Additionally, through our partnerships with the Golden Gate National Parks Conservancy and the Marin County Probation Department, we place older youth in summer internships that provide hands-on work experience, mentorship, and skill-building to prepare them for future careers.

Additionally, our Civic Education & Leadership initiative empowers students to engage with their communities, learn about public service, and develop leadership skills that prepare them for future advocacy and civic participation.

Throughout the year, we participate in community performances, including the Mill Valley Parade, International Children's Day, Marin County Fair, and the Sausalito 4th of July Parade. Additionally, we organize our own performances; currently, we are rehearsing for our Children's Play about Marin City's history and Marinship to be held in August 2025.

In addition to structured programs, we emphasize experiential learning through field trips. Each year, we add new trips alongside recurring ones, such as the Bolinas Museum, Berkeley Art Museum & Pacific Film Archive, Marin County's New Emergency Command Center & SMART Train Ride, and Six Flags Discovery Kingdom.

To celebrate the achievements of our students, we organize the annual Merit Award Celebration, honoring their dedication and growth throughout the year.

But Performing Stars is more than an afterschool program—it is a launchpad for opportunity. A child who first joins us at age seven to learn dance might later receive a scholarship to a prestigious performing arts program and, years down the line, find themselves on a college stage or working in arts administration. A student who first steps into our leadership program as a shy middle schooler might later stand in front of a crowd, advocating for their community. This is the impact of sustained engagement—it shapes lives,

builds futures, and transforms communities.

Which community priority does your project align with? (See Application Guidelines for descriptions) (check as many boxes as applicable)

Children and Youth Services

Housing Support Services

Describe how your project aligns with these priorities.

At its core, Performing Stars is about access—access to the arts, education, mentorship, and personal growth. Our work directly aligns with Marin County’s priority funding areas by addressing disparities in access to extracurricular and enrichment programs for low-income youth. In a county where the cost of living creates barriers to participation in enrichment programs, we work to ensure that financial constraints do not dictate a child’s opportunities.

Performing Stars serves as a vital connector to opportunities that support youth development and family well-being. Many of our participants live in Golden Gate Village and other affordable housing communities, where access to structured afterschool and summer programs is limited but essential for families across all income levels, yet those who need it most are too often given minimal access to such resources.

Our programs offer a safe and engaging environment for children, allowing caregivers to maintain employment, pursue education, or access other essential resources that contribute to family stability and secure housing. Performing Stars recognizes that strong communities are built on both opportunity and access, which is why we provide the following:

- 1) Year-round youth programming that offers arts education, leadership development, and career exploration, supporting families with structured afterschool and summer opportunities.
- 2) Transportation assistance to ensure that students can fully participate in enrichment programs, field trips, and internships regardless of location.
- 3) Scholarships for summer camps and specialized programs that create pathways for students to explore new experiences and build future goals.
- 4) Collaborations with schools, community organizations, and housing providers to ensure that families receive coordinated resources that support their overall well-being.

Performing Stars is not just about providing programs—it’s about ensuring that every child has the same opportunities to grow, lead, and succeed. By integrating youth development with broader community support, we help ensure that youth and families possess the tools, experiences, and mentorship they need to thrive.

Select HUD National Objective to be achieved with funding. Check all that apply.

Activities benefiting low and moderate-income persons. (LMI)

Activities benefiting low and moderate area. (LMA)

All projects funded are required to Affirmatively Further Fair Housing (AFFH) which is defined as taking "meaningful actions, in addition to combating discrimination, that overcome patterns of segregation and foster inclusive communities free from barriers that restrict access to opportunity based on protected characteristics."

How will this project Affirmatively Further Fair Housing?

While Performing Stars is not a housing-focused organization, our work actively supports access to opportunity for youth and families living in Marin City and other affordable housing communities across Marin County. Located in Golden Gate Village (GGV), the county’s largest public housing development, Performing Stars serves a community that has long experienced racial and economic segregation. Our programs directly counteract these disparities by removing barriers to enrichment opportunities that are often concentrated in more affluent areas.

Our affirmative marketing and outreach efforts ensure that youth from federally protected classes are aware that they can access our programs and opportunities. Our approach to affirmative marketing includes not only traditional outreach (flyers, social media, community partnerships) but also the deep trust we have built over the 35 years we have been in the community. Furthermore, we prioritize relationships with local organizations, faith-based groups, and cultural institutions to reach families who might not engage with traditional marketing. Many of our participants are second-generation Performing Stars students—the children of alumni who once benefited from these same programs.

One of our biggest anticipated challenges relates to the upcoming revitalization of Golden Gate Village by the Marin Housing Authority and the County of Marin. For 34 of our 35 years, Performing Stars has operated out of a three-bedroom unit in GGK, ensuring that our services are physically accessible to the families we serve. However, with redevelopment plans underway, we anticipate potential challenges in maintaining on-site accessibility for families due to planned redevelopment. If relocation is required, we will need to adapt outreach strategies to ensure continued accessibility for residents who rely on in-community programming.

HUD has recognized the importance of our programs and services, and we have received approval to continue operating within the housing community. Remaining in close proximity to residents is essential for maintaining accessibility and trust, ensuring that Performing Stars continues to provide culturally relevant programming that affirms fair housing by expanding educational and career opportunities for youth.

All projects funded are required to conduct Affirmative Marketing. For more information about affirmative marketing, visit the [Marin County Federal Grants website](#) and scroll down to the Affirmative Marketing panel.

Refer to the [Current Marin County Income Limits](#) to determine income level for use in the table below.

Approximately how many moderate, low, very low and extremely low-income persons will directly benefit from the program/project? Projects that support low-income persons will be prioritized.

	Number
Moderate Income	0
Low Income	20
Very Low Income	50
Extremely Low Income	80
TOTAL	150

Notes or clarifying information on the unit count:

Numbers are based on previous participation rates and past increases from year to year but may fluctuate slightly based on enrollment trends.

How does your organization verify client income? Income verification is required except if the client is presumed benefit by HUD. Presumed benefit applies to abused children, battered spouses, the elderly, adult persons with serious disabilities, the homeless, illiterate persons, and migrant farm workers.

Participants in Performing Stars, along with their support system (parent, guardian, etc.), are required to

complete comprehensive annual forms about themselves, in which we ask the adult to verify their annual income and its source. Additionally, many of our youth qualify for free or reduced-price lunches at their schools, which serves as an indicator of their income level. As a community-based organization, the staff at Performing Stars is familiar with most of the families applying and has a good understanding of their financial situation.

Estimate the demographics of moderate, low, very low, and extremely low-income persons who will directly benefit from the program/project. The total number of beneficiaries should equal the total in the previous questions.

	Total Number of Persons	Number Identifying as Hispanic
American Indian or Alaskan Native	0	0
Asian	6	1
Black or African American	92	10
Native Hawaiian or Other Pacific Islander	5	1
White	27	0
American Indian and White	3	0
Asian and White	0	0
Black and White	10	0
American Indian and Black	0	0
Multi-Racial	7	6
TOTAL	150	18

Total Number of Persons (Must equal total identified under income level)

150

Total Number Identifying as Hispanic

18

Female-Headed Households (out of above total)

18

Persons with Disabilities (out of above total)

10

Notes or clarifying information on the unit count:

In comparison to our Mid-Year Report for 2024-2025, which indicates a total of 100 beneficiaries, we expect an increase in the number of students, as we do annually. Each successful year brings a rise in interest in our program, often surpassing our capacity. Given the success of this summer, the demand for our scholarship programs is particularly high. There are many youth who deserve access to enrichment and we are proud to partner with the many organizations that provide scholarships free of cost to our youth. Therefore, we aim to enhance our capabilities, which can only be achieved with additional funding.

PROJECT MANAGEMENT & FINANCIAL DATA

If your project or organization was funded previously, list past project(s), goals, and accomplishments/activities.

Successfully secured and fulfilled 179 scholarships to summer camps, internships, and field trips. Performing Stars youth participated in various public performances and cultural events, including Marin County Fair - Historical Figures Presentation (4th of July), Goodman's Summer Fair (August 4), and Marin Sheriff's Dept. National Night Out (August 6). In collaboration with Dominican University, our youth worked on two community art projects: "Marinship Voices" at Pickleball Courts and "History of Resilience" Mural at Golden Gate Village (Inspired by Black quilting artists of Gee's Bend.)

This past year saw a special focus on civic education, empowering our youth to engage with local government, community advocacy, and the democratic process. At MLK Jr. Academy, we organized voting education programs, giving students an age-appropriate introduction to how elections work. As part of this initiative, students participated in a mock election, casting votes on their favorite breakfast, lunch, and subject. The next day, we displayed the results on a large poster in the cafeteria, allowing students to see how their school voted. To make the experience even more impactful, the winning meal was served as a 'Fun Friday' selection—demonstrating how voting leads to real-world outcomes. As the election approached, we collaborated with the Marin County Elections Department on a project that involved a series of 28 banners hanging from street lights along Donahue Street. The banners feature Marin City children along with a message: "I'm too young to vote ... what's your excuse?" The kids and the community expressed immense joy about the project.

Each year, we hold an award ceremony to recognize our youth participants' hard work and dedication. Every young person who participated received at least one award, and many received several. Awards are based on a merit system that we monitor throughout the year, taking into account their attendance, participation, behavior, and effort.

This event also allows caregivers and families to witness the dedication their children have shown in our program and see how much we appreciate their efforts. This support is important for parents and helps the youth recognize their accomplishments.

If your agency has remaining funds previously approved, please describe the timeline for expending the fund balance.

Performing Stars has no remaining funds.

Describe your organization's experience with administering grants and specifically federal grants.

Performing Stars started with a zero budget in 1990. The Executive Director was responsible for all aspects of grants, including research, writing, management, and reporting. In 2012, we hired a grant writer, and in 2024, we hired a Development Director who performs the same functions. We have always had a bookkeeper who maintains accurate financial records that demonstrate our progress and compliance, keeping us accountable to our funders.

We are proud that our effective grant management has helped us maintain our trust with our funders and that we are able to continue to secure future funding that significantly impacts our organization's ability to serve our community.

We are grateful for CDBG's ongoing support over the past 35 years, and this has been our only source of federal funding.

Describe who will supervise and manage the project and their past experience with project management.

Executive Director Felecia Gaston has over 35 years of experience in nonprofit management. Tra'Von Riley and Sherine Agbulos, Executive Assistants to the Director, have both been managing programs and administrative duties. Mercedes Morgan oversees the gardening and food distribution programs. All staff members listed above have prior experience working in low-income communities.

Describe any recent or upcoming leadership transitions.

Our organization has been engaged in strategic and sustainability planning since 2012. We have hired a team of loyal and trusted staff to handle day-to-day programmatic operations and developed an operations manual. We conduct annual retreats with stakeholders and staff to plan for the future of Performing Stars.

Describe any flexibility regarding your projects start/completion date.

Our Afterschool and Summer Enrichment Program operates on a year-round basis, ensuring continuous engagement and support for youth in Marin City and other underserved communities. The afterschool component runs throughout the academic year, while our summer programming—including camp scholarships, internships, and cultural excursions—takes place during the summer months.

Because our programs are ongoing, we have the flexibility to scale activities based on available funding and community needs. Additional funding would allow us to expand services, increase enrollment, and enhance programming at any point in the year. While we maintain a structured calendar for our scheduled activities, our team is adept at adapting to shifting circumstances, whether that means adjusting timelines for specific initiatives, launching new program components, or extending opportunities to more students as resources become available.

In short, our work never truly “starts” or “ends”—it is a continuous commitment to providing enriching experiences that uplift youth and families throughout the year.

Required Attachments:

Attach Project Budget: Complete the project budget template provided and submit along with application. If you have a project budget that provides the information requested in the template, you may submit that in-lieu of the template. Please note: the project budget should reflect the total cost of the project NOT just the CDBG request.



2025-26 Project Budget for Performin... .pdf

Attach Organization Budget: : Upload your organization or fiscal sponsors annual budget.



2025-26 Organization Budget for Perf... .pdf

Attach Dynamic Flood Map



2025-26 Dynamic Flood Map for Perf... .pdf

Attach Optional Miscellaneous Documents



Copy of PERFORMING STARS CATAL... .pdf

Submission

Please review your responses above for accuracy.

Name and Title of person completing this application.

Anna Jay, Development Director

By checking this box

I hereby certify that the information in this application is true and accurate to the best of my knowledge.

Project Budget							
Organization Name: Performing Stars of Marin							
Project Title: Youth Afterschool and Summer Enrichment Program							
Date: 2/16/2025							
INCOME:	County NOFA Request		Other Funding Sources		In Kind		Total Proposed Project Income
Committed							
Foundations:							
Marin Community Foundation (MCF)			\$125,000.00				
VWLackey & DonS Fund (MCF)			\$15,000.00				
Joy Fund (MCF)			\$35,000.00				
Zephyr Fund (MCF)			\$10,000.00				
Marin Charitable Association			\$6,400.00				
Sato Foundation			\$15,000.00				
TomKat			\$62,500.00				
First 5 Marin			\$40,000.00				
Narada Michael Walden Foundation			\$5,000.00				
Amy Metzenbaum Fund			\$7,500.00				
Tom Theodoros Fund			\$10,000.00				
Government:							
Corporations:							
Dodge & Cox			\$10,000.00				
Redwood Credit Union			\$12,500.00				
Individual Contributions: (list total):							
San Francisco Foundation (Anonymous Donor Advised)			\$10,000.00				
Earned Income:							
Other (specify):							
Subtotal, Committed Income			\$368,900.00		\$0.00		\$368,900.00
Uncommitted							
Federal Grants Request							
Other Foundations:							
Milagro			\$25,000.00				
Government:							
CDBG	\$20,000.00						
Corporations:							
Target			\$5,000.00				
Wellsfargo			\$25,000.00				
Individual Contributions:							
Subtotal, Uncommitted Income	\$20,000.00		\$55,000.00		\$0.00		\$75,000.00
Other							
Earned Income:							
Subtotal, Earned Income			\$0.00				
Grand Total Income	\$20,000.00		\$478,900.00		\$0.00		\$498,900.00
EXPENSES (Add rows to list other expenses)							
Personnel Expenses							
Executive Director (% FTE: 35)	\$5,000.00		\$45,000.00				

Program Coordinator (% FTE: 85)	\$5,000.00		\$30,600.00			
Operations Manager (% FTE: 75)			\$29,500.00			
Program Support - Driver (% FTE: 55)	\$3,000.00					
Benefits (@ %: 28.5)	\$500.00		\$28,000.00			
Subtotal Salaries and Benefits	\$13,500.00		\$133,100.00		-	\$146,600.00
Contracted Services						
Professional Fees - legal & Accounting			\$31,290.00			
Arts Providers / Teachers			\$24,000.00			
Event Labor			\$15,000.00			
Outreach Workers			\$20,000.00			
Communications, Grant Writer, Graphics			\$35,000.00			
Subtotal Contracted Services			\$125,290.00		\$0.00	\$125,290.00
Direct Project Related Expenses						
Rent			\$4,200.00			
Utilities			\$3,570.00			
Supplies			\$50,000.00			
Equipment			\$2,050.00			
Travel						
Postage, Shipping, Printing			\$2,275.00			
Books & Subscriptions			\$3,050.00			
Nutritious meals & snacks	\$4,000.00		\$4,000.00			
Insurance - Auto			\$2,305.00			
Transportation	\$2,500.00		\$5,000.00			
Insurance - liability			\$3,325.00			
Marketing & Advertising			\$1,750.00			
Staff & Board Development			\$3,500.00			
Business Expense			\$35.00			
Safety Net Emergency Grants			\$50,000.00			
Bus Transportation costs			\$25,000.00			
Awards & Scholarships			\$15,000.00			
Food & Supply Distribution					\$15,000.00	
Subtotal, Direct Project Related Expenses	\$6,500.00		\$175,060.00		\$15,000.00	\$196,560.00
General Development						
Electrical						
Plumbing						
Roof Replacement						
Painting			\$3,000.00			
General Construction Labor			\$4,000.00			
Materials						
Subtotal, Direct Project Related Expenses	\$20,000.00		\$7,000.00		\$0.00	\$27,000.00
Indirect Expense - specify % in column A below (must be HUD approved)						
						\$0.00
Fiscal Sponsorship Fee (specify % in column A below)						
						\$0.00
Grand Total All Expenses	\$20,000.00		\$440,450.00		\$15,000.00	\$495,450.00

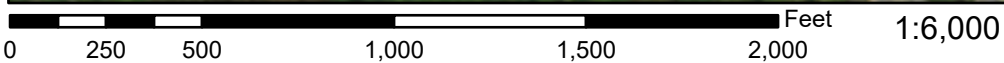
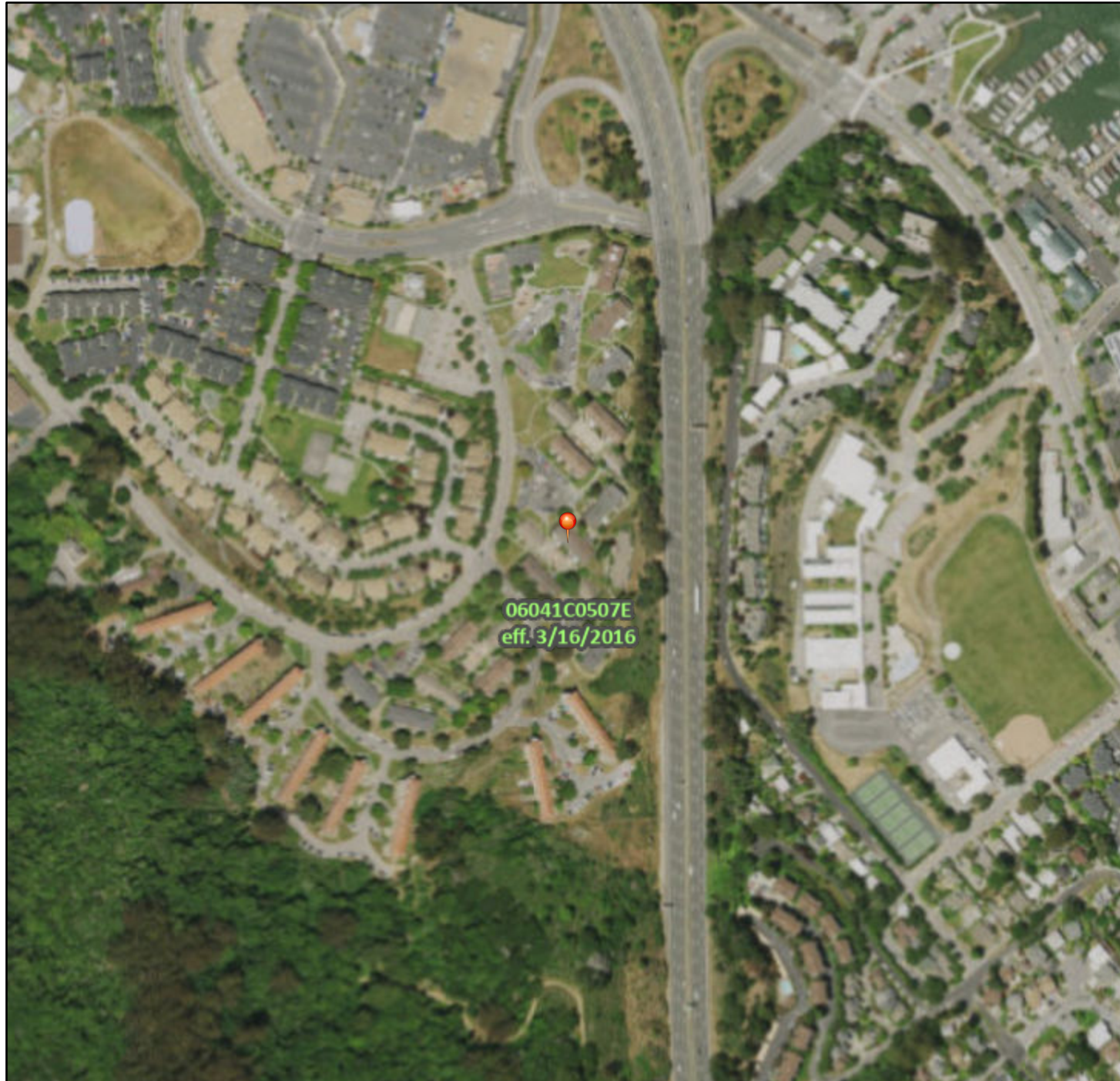
Summarized Budget for Performing Stars & Phoenix
--

	23-24 Total Actual	24-25 Budget	25-26 Budget
<i>Income</i>			
Total 4000 · Direct Public Contributions	202,645	95,000	100,000
Total 4200 · Non-Government Grants	444,044	697,800	676,500
Total 4500 · Government Grants	181,779	127,242	132,242
Total in-kind revenue	0	15,000	15,000
Other Revenue	0	15,000	15,000
<i>Total Income</i>	<i>894,096</i>	<i>950,202</i>	<i>938,942</i>
<i>Expense</i>			
Total 7000 · Grants & Contract Expense	57,895	25,000	75,000
Total 7200 · Staff Salary & Benefits	166,740	256,158	280,725
Total 7500 · Contract Services	337,945	256,233	273,984
Total 8100 · Non Personnel Expenses	173,799	244,069	174,900
Total 8200 · Facilities and Equipment	17,914	5,275	4,400
Total 8300 · Travel and Meetings	25,281	52,854	31,480
Total 8500 · Other Types of Expenses	17,859	26,000	49,350
Total 8600 · Business Operations	3,013	265	250
<i>Total Expense</i>	<i>860,638</i>	<i>865,854</i>	<i>890,089</i>
<i>Net Ordinary Income</i>	<i>33,458</i>	<i>84,348</i>	<i>48,853</i>

National Flood Hazard Layer FIRMette



122°30'48"W 37°52'24"N



Basemap: USGS National Map: Orthoimagery: Data refreshed October, 2020

122°30'11"W 37°51'55"N

Legend

SEE FIS REPORT FOR DETAILED LEGEND AND INDEX MAP FOR FIRM PANEL LAYOUT

- | | | |
|------------------------------------|--|--|
| SPECIAL FLOOD HAZARD AREAS | | Without Base Flood Elevation (BFE)
<i>Zone A, V, A99</i> |
| | | With BFE or Depth <i>Zone AE, AO, AH, VE, AR</i> |
| | | Regulatory Floodway |
| OTHER AREAS OF FLOOD HAZARD | | 0.2% Annual Chance Flood Hazard, Areas of 1% annual chance flood with average depth less than one foot or with drainage areas of less than one square mile <i>Zone X</i> |
| | | Future Conditions 1% Annual Chance Flood Hazard <i>Zone X</i> |
| | | Area with Reduced Flood Risk due to Levee. See Notes. <i>Zone X</i> |
| | | Area with Flood Risk due to Levee <i>Zone D</i> |
| OTHER AREAS | | NO SCREEN Area of Minimal Flood Hazard <i>Zone X</i> |
| | | Effective LOMRs |
| | | Area of Undetermined Flood Hazard <i>Zone D</i> |
| GENERAL STRUCTURES | | Channel, Culvert, or Storm Sewer |
| | | Levee, Dike, or Floodwall |
| OTHER FEATURES | | 20.2 Cross Sections with 1% Annual Chance |
| | | 17.5 Water Surface Elevation |
| | | 8 Coastal Transect |
| | | Base Flood Elevation Line (BFE) |
| | | Limit of Study |
| | | Jurisdiction Boundary |
| | | Coastal Transect Baseline |
| MAP PANELS | | Digital Data Available |
| | | No Digital Data Available |
| | | Unmapped |
- The pin displayed on the map is an approximate point selected by the user and does not represent an authoritative property location.

This map complies with FEMA's standards for the use of digital flood maps if it is not void as described below. The basemap shown complies with FEMA's basemap accuracy standards

The flood hazard information is derived directly from the authoritative NFHL web services provided by FEMA. This map was exported on **1/24/2022 at 5:20 PM** and does not reflect changes or amendments subsequent to this date and time. The NFHL and effective information may change or become superseded by new data over time.

This map image is void if the one or more of the following map elements do not appear: basemap imagery, flood zone labels, legend, scale bar, map creation date, community identifiers, FIRM panel number, and FIRM effective date. Map images for unmapped and unmodernized areas cannot be used for regulatory purposes.

PERFORMING STARS SUMMER CATALOG

JUNE TO AUGUST 2024



PERFORMING STARS OF MARIN

Thriving Kids, Families & Communities
Founded 1990

COMMUNITY DONORS



PRIVATE DONORS

Amy Metzbaum & Joel Yanow

TABLE OF CONTENTS

Summer Scholarship Programs 4

Marin Ballet	5
Marin Advantage Program at Dominican University	6
Marin GreenPlay	7
Vacation Bible School, Growing with Jesus	9
Marin Shakespeare Company	10
Kids Across Marin Play	11
Sailing Education Adventures	13
Sausalito Sister City Excursion to Sakaide, Japan	15
St. Stephens' Camp Create	16
Nature Bridge's Coastal Camp	18
Spaulding Marine Center	20
Summer Art Project with Dominican University	21
Performances	23
International Children's Day	24
Mill Valley's Juneteenth Freedom Festival	25
4th of July at the Marin County Fair	26
Goodman's Summer Fair	27
Marin Sheriff's Dept. National Night Out	28
Events	29
Merit Award Celebration	30
Field Trips	31
2024 Summer Concert Series: Andre Thierry & Accordion Soul	32
Six Flags Discovery Kingdom	33
Bolinas Museum	34
Berkeley Art Museum & Pacific Film Archive	36
Marin County's New Emergency Command Center & SMART Train Ride	38
Internships	40
Golden Gate National Parks Conservancy	41
Marin County Probation Dept. Career Explorers	42

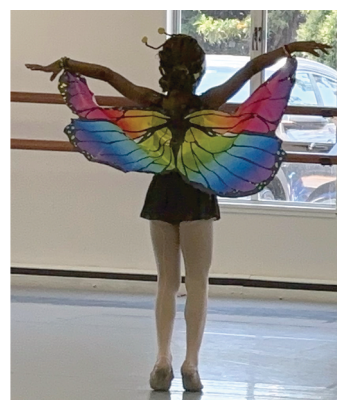
SUMMER SCHOLARSHIP PROGRAMS



MARIN BALLET: BEAUTIFUL EARTH

- Week long program from June 17-21 at Marin Ballet in San Rafael
- \$560 per participant
- 5 scholarships awarded -> total value \$2,800

LET US INSPIRE YOUR CHILD, ages 3 – 9, will explore our Beautiful Earth through dance, creative movement, arts/crafts, and stories. Each day your young dancer will discover our world in a new way through the following 5 themes: Undersea Exploration, Forest Adventure, Our Growing World, Jungle Safari and Soaring Above the Ground. Be sure to bring a friend to this fun filled, very active, weeklong summer camp.



MARIN ADVANTAGE PROGRAM AT DOMINICAN UNIVERSITY

- 2 Courses offered through Dominican University
- EDUC 1000 - Navigating College
- June 18, 20, 25, & 27
- 1 Unit
- ENGL 1111 - Writing and Rhetoric: Effective Communication
- June 18-July 18, (Tue., Wed., Thurs.)
- 1.4 Units
- 2 Participants

Dominican provides students with the opportunity to chart a path from high school to college and realize their educational and professional goals.



MARIN GREENPLAY

- Week long program from June 24-28 at various locations across Marin County
- Transportation & meals provided by PStars
- \$645 per participant
- 7 scholarships awarded -> total value \$4,515

The GreenPlay Experience: Each day is a new adventure;

This camp allows our more experienced campers the chance to try out our menu of weekly offerings with a daily taste of each of our programs. A day of our Digital Natives™ camp, tablets provided, with geocaching, using nature apps, bioblitzing and nature journaling. Outdoor rock climbing with our **Rock Five** professionally guided climbing camp. Kayaking in Sausalito in the morning and a scavenger hunt at the Bay Model Museum in the afternoon, along with some games on the lawn. Use binoculars (provided) to learn how to birdwatch with our founder Julie and find out why people love the Japanese art of forest bathing. Boogie boarding and beach fun a la our **Ride Five** camp, including tidepooling with our founder Julie in the mornings. We'll do a beach clean up to give back to the Earth.



Ride Five: Kayaking, boogieboarding & beach fun camp; Exciting beach fun including kayaking, boogie boarding, games, tidepooling (low tide weeks only) and more! This camp treats your child to three days of boogie boarding at Muir Beach or Stinson Beach, one morning of kayaking in Sausalito followed by a scavenger hunt at the Bay Model Museum and a unique exploration and service experience day with Marin County Parks at Kent Island in Bolinas (when available) or another suitable service experience.



FIRST MISSIONARY BAPTIST CHURCH VACATION BIBLE SCHOOL, GROWING WITH JESUS

- 2 day program on June 27 & 28
- Transportation provided by PStars
- Meals provided by camp

Participants learn about God's teaching.



PLAYING
FOR
GOOD

MARIN SHAKESPEARE COMPANY: TWELFTH NIGHT

- 3 week long program from July 1-19, concluding with a performance of Shakespeare's play Twelfth Night, taking place at Forest Meadow Amphitheatre in San Rafael
- Transportation & meals provided by PStars
- \$975 per participant
- 2 scholarships awarded -> total value \$1,950

We make it fun for young people to explore Shakespeare's exciting characters, language and stories. Instruction will focus on creative play, character creation, and rehearsal, culminating in a performance of an abbreviated Shakespeare play.

KIDS ACROSS MARIN PLAY, MINI: BEAUTY & THE BEAST

- 2 week long program from July 1-12, concluding with a performance of the musical adaptation of Beauty & The Beast, taking place at Mill Valley Community Church
- Transportation provided by PStars
- Meals provided by camp
- Camp valued at \$800 per participant
- 3 scholarships awarded -> total value \$2,400



KIDS ACROSS MARIN PLAY, JUNIOR: LEGALLY BLONDE

- 2 week long program from July 15-26, concluding with 2 performance of the musical adaptation of Legally Blonde, taking place at Mill Valley Community Church
- Transportation provided by PStars
- Meals provided by camp
- \$800 per participant
- 3 scholarships awarded -> total value \$2,400



SAILING EDUCATION ADVENTURES, MINI: INTRODUCTORY

Week long program from July 8-12 taking place at Loch Lomond Marina in San Rafael.

Transportation & meals provided by PStars

\$395 per participant

5 scholarships awarded -> total value \$1,975

Introductory half-day sessions introduce younger children to sailing. Light morning breezes give younger children an opportunity to start learning about wind, water, safety, and fun. Sail Camp Counselors sail in the boats with Mini Campers to directly teach sailing skills in small groups. Each student rotates through the different responsibilities of sailing (steering, controlling the sails, etc) with direct assistance from the on-board Counselor. Youths are taught basic sailing skills in our sloop-rigged, 16.5-foot Catalinas by our experienced staff.

Sausalito Sister City

Excursion to Sakaide, Japan

10 day overnight trip from July 26-August 7 to Sakaide, Japan

\$3,291 per participant

2 youth sponsored -> total value \$6,582

The Sausalito Sister Cities program aims to promote international friendship, understanding and cooperation between the citizens of Sausalito, CA. and Sakaide, Japan. Through cultural exchange, our program seeks to build bridges of friendship between both communities to promote world peace. Two Performing Stars participants were given the opportunity to go on this trip. The Phoenix Project assisted the family with \$1,400 to go towards getting their passports & the necessary items required for travel. Additionally PX received \$600 in donations for the girls to have spending money while in Japan.

Photos for collage

<https://photos.app.goo.gl/spAfPUqaHbQcfyh8>

St. Stephens' Camp Create

Week long program from July 15-19 taking place at St. Stephens Episcopal Church in Belvedere

Transportation & meals provided by camp

\$35 per participant

6 scholarships awarded -> total value \$210

Description from camp website:

Each day campers attend 4 classes in various art forms such as drumming, painting, singing and multi-media arts. These classes are carefully designed to encourage curiosity, creativity, and community. Campers, teen counselors and inspiring artist-teachers learn through the arts, form new friendships and prepare an arts portfolio. The week culminates with the Friday Night Festival with their families share a potluck dinner and performances by the campers.

Campers will work with professional artists and teen counselors to explore this year's theme of "A Wild Symphony" through trying new things, singing, drumming, storytelling and making art, and having fun.

Photos for collage

<https://photos.app.goo.gl/NaYK9azb1Nny1M6M9>

Nature Bridge's Coastal Camp

Week long program from July 29-August 2 taking place at Nature Bridge at Fort Cronkhite in the Marin Headlands

Transportation & meals provided by camp

\$560 per participant

5 scholarships awarded -> total value \$2,800

Description from camp website:

(entering 1st/2nd grade) Head out on the trail, take a closer look and get creative! The Marin Headlands are alive with shapes, patterns, colors, textures and sounds that are sure to inspire your inner artist. Let your imagination come alive as you experiment with rhythm, dance, song and art. Now featuring an interactive music, rhythm and dance session with Drumming Magic!

(entering 3rd/4th grade) Join Coastal Camp for a week in the wild! Learn how to prep for outdoor adventures and test your wilderness survival skills. Discover how to use the natural resources around you to build a shelter, as well as which plants can help you survive.

(entering 5th/6th grade) Explore the wild and acquire outdoor skills to navigate any environment. Learn how to make a compass and survive the elements with only the resources around you.

No photos available yet. Will be uploaded to album soon

<https://photos.app.goo.gl/Z8F1PsSzeNv7CKDD9>

Spaulding Marine Center

Week long program taking place at Spaulding Marine Center in Sausalito

Meals provided by PStars

\$650 per participant

3 scholarships awarded -> total value \$1,950

Description from camp website:

Our summer camps provide a unique opportunity for children to immerse themselves in the world of sailing and woodworking. Through hands-on activities and expert guidance, campers have the chance to explore the rich maritime heritage of the San Francisco Bay Area while developing valuable skills and confidence.

Photos for collage

<https://photos.app.goo.gl/o5SfF3bD1fhfdzF49>

Summer Art Project with Dominican University

4 day long program from August 5-8

Transportation & meals provided by PStars

Dominican University honors students & Performing Stars of Marin will collaborate on two public art projects: "Marinship Voices" in the Pickleball Courts and; "History of Resilience" murals on the Golden Gate Village's trash bins inspired by the Black quilting artists of Gee's Bend. Both projects aim to make visible the culture and heritage of Marin City's history. Students will design stencils that describe phrases from individuals who moved out to work at Marinship in the 1940s. In addition, students will create colorful geometric designs that are inspired by the unique and stunning quilts created by the acclaimed quiltmakers and freedom fighters of Gee's Bend. As they work together, students will learn about the rich and often overlooked history and heritage of Marin City's founding residents.

Photos for collage

<https://photos.app.goo.gl/bB1RkYLTXCNtDrLu8>

Performances

International Children's Day

Performing Stars opens their "Historical Figures Presentation" at Dr. Martin Luther King Jr. Academy Middle School on International Children's Day, June 1.

Photos for collage

<https://photos.app.goo.gl/jh95pZiwJNyV5BME7>

Mill Valley's Juneteenth Freedom Festival

The Performing Stars dance troupe showcases their "Big God" piece for Mill Valley's Juneteenth Freedom Festival Celebration on June 15.

Photos for collage

<https://photos.app.goo.gl/LwFrKTrRERpQTwzU6>

4th of July at the

Marin County Fair

Performing Stars showcases their “Historical Figures Presentation” on the Community Stage at the Marin County Fair on the 4th of July. Tickets, lunch & water was provided for all performers, staff, & 1 guest for each performer.

Photos for collage

<https://photos.app.goo.gl/93MzdrSWQrVZqEBd6>

Goodman’s Summer Fair

The Performing Stars dance troupe showcases their “Big God” piece for Goodman’s Summer Fair on August 4.

Photos for collage

<https://photos.app.goo.gl/EkEHjfxAgATifogr6>

Marin Sheriff's Dept.

National Night Out

The Performing Stars dance troupe showcases their "Big God" piece for Marin City's National Night Out on August 6.

Photos for collage

<https://photos.app.goo.gl/LG5JeCmBYgrwABKR8>

Events

Merit Award Celebration

End of program celebration held on July 3, for the participants who completed the "Historical Figures Presentation". Every child was given a goodies bag that was personally handcrafted by the PStars staff. Participants were then able to add more goodies to their bags from a wide selection of art supplies, beauty supplies, books, jewelry, school supplies, & toys. Once their bag was full, participants were able to enjoy some pizza & popsicles.

Photos for collage

<https://photos.app.goo.gl/arYzS1wrHfGubECQ6>

Field Trips

2024 Summer Concert Series

Andre Thierry & Accordion Soul

Event at Marin Art & Garden Center

Transportation & meals provided by PStars

\$25 per ticket (adults charged only)

9 adults -> \$225

Description from event website:

A fun evening of live music by Andre Thierry & Accordion Soul at Marin Art & Garden Center. These returning favorites brought their special flavor of Zydeco/soul back to the lawn for a fabulous afternoon of classics, covers, and more that rolled on to evening.

Photos for collage

<https://photos.app.goo.gl/t39johtpijfBads97>

Six Flags Discovery Kingdom

Day trip to Six Flag Discovery Kingdom in Vallejo

Transportation, parking & meals provided by PStars

\$60 per participants

15 participants -> total value \$900

Performing Stars appreciates their dance troupe by treating them to a day at Six Flags Discovery Museum.

Photos for collage

<https://photos.app.goo.gl/d8Mx6Ey2VBghKNXh8>

Bolinas Museum

Day trip to Bolinas

Value?

Transportation provided by Bolinas Museum

Meals provided by PStars

of participants?

A beautiful day spent in the small town of Bolinas. Museum Executive Director Louisa Gloger & Coastal Marin Art & History Curator Elia Haworth started off with a walking tour to Bolinas Beach. Participants were given fun facts about the wildlife, & the geographical significance of the town. After, participants were brought back to Bolinas Museum & got a tour of the current exhibits on display; Arleene Correa Valencia's: *Llévanos Contigo / Take Us With You*, Gallery Route One - Latino Photography Project: *Nuestra Identidad / Our Identity*, & their Miwok History Collection. The final exhibit visited was Keith Hansen's (aka the Bird Man of Bolinas) wildlife exhibit. This small room showcased numerous pieces by Hansen, including sketches, paintings & taxidermied birds. The trip concluded with lunch in the museum's cozy courtyard.

Photos for collage

<https://photos.app.goo.gl/w1fw1hYJQDHWR1kBA>

Berkeley Art Museum & Pacific Film Archive

Day trip to Berkeley Art Museum & Pacific Film Archive

Transportation & meals provided by PStars

of participants?

Performing Stars & Dominican honors students visit the Berkeley Art Museum & Pacific Film archive to catch a glimpse of the exhibit "A Movement in Every Direction: Legacies of the Great Migration".

Description from museum website:

(This exhibition) illuminates the enduring impressions of the Great Migration through the eyes and work of twelve contemporary artists. Between 1915 and 1970, in the wake of racial violence and pervasive inequalities, nearly half of the country's African American population left their homes in the rural South. Many migrated to cities like Chicago, Detroit, New York, Los Angeles, and Houston, while others relocated within the South. Between 1940 and 1970, the Bay Area's own Black American population increased by nearly 300,000. The Great Migration transformed the economic, cultural, social, political, and ecological makeup of the United States. This extensive dispersal of people across the country altered nearly every aspect of Black life and culture. By exploring very personal and at times difficult histories, the artists consider how reverberations from the Great Migration continue to affect their lives and the lives of many Black Americans. *A Movement in Every Direction* reveals lesser-known stories of this unprecedented phenomenon. It honors the paths, decisions, and sacrifices of ancestors; their pursuit of their hopes and dreams; and the brighter tomorrows they imagined for themselves and their loved ones. This exhibition features newly commissioned works across media by twelve artists, including Akea Brionne, Mark Bradford, Zoë Charlton, Larry W. Cook, Torkwase Dyson, Theaster Gates Jr., Allison Janae Hamilton, Leslie Hewitt, Steffani Jemison, Robert Pruitt, Jamea Richmond-Edwards, and Carrie Mae Weems.

Photos for collage

<https://photos.app.goo.gl/RqJGACgCEdoRdoKD6>

Marin County's New Emergency Command Center

& SMART Train Ride

Day trip to Marin County's new emergency command center & to Petaluma via SMART Train

Transportation & meals provided

16 participants

Performing Stars visit Marin County's Fire Dept.'s & Office of Emergency Management's new emergency command center in San Rafael. Participants were given a tour of the new space, & witnessed emergency calls being answered in real time. The tour continued on with Steven Torrence & (please add the lady's name) from the county's office of emergency management, who shared details of how they respond to emergencies & the work that happens to make sure it is handled efficiently. Participants then took a ride on the SMART train from San Rafael to Petaluma to enjoy the scenery & experience the train. Afterwards, they were treated to pizza at Mulberry's Pizzeria.

Photos for collage

<https://photos.app.goo.gl/4EvgDQT4KktXYcaX6>

Internships

Golden Gate National Parks Conservancy

Linking Individuals to their Natural Communities

8 week paid internship from June 18-August 2, through the Golden Gate National Parks Conservancy

1 intern referred

Description from camp website:

Are you passionate about creating positive change in your community? Do you enjoy being outside? Are you looking for a meaningful way to spend the summer and willing to try new things? Linking Individuals to their Natural Communities (LINC) is a summer program for high school students focused on community building, service learning, and exploring local communities and parklands.

Photos for collage

<https://photos.app.goo.gl/h7cc8jyjFDSkUFMt7>

Marin County Probation Dept.

Flyers

Career Explorers

6 week paid internship from July 1-August 9, through the Marin County Probation Department

Transportation provided by Marin County Probation Dept.

Meals provided by PStars

3 interns hired

Marin County Probation Department Career Explorers program provides summer interns to various agencies & community based organizations across Marin County. While interning with Performing Stars/Phoenix Project, they get to experience the real life day-to-day operations of our organization. Interns were delegated many tasks, including data input, disposal of past dated documents, chaperone field trips, & gardening within the community.

Photos for collage

<https://photos.app.goo.gl/NpLmD9Z4oqbtPUQY7>