



Marin Civic Center Conservancy

Marin County Civic Center Patio

County of Marin | June 17, 2026



TEAM LEADERSHIP



Paul Cooper

AIA, LEED AP BD+C, DBIA

Principal-in-Charge, TEF



Lindsey Moder

AIA, LEED AP, NCARB

**Project Manager
& Preservation Architect, TEF**

PROJECT PRINCIPLES

HONOR AND RE-ENVISION



Honor the spirit and fidelity of Frank Lloyd Wright's original vision while designing for 2030+ with a modern sensibility



Re-envision the Patio to improve functionality and comfort, including lighting, AV, shading, and furniture, to create an inviting space for staff and visitors to use



Revitalize the Landscape to enhance the existing natural palette and to provide ease of maintenance

NEED FOR IMPROVEMENTS



ARCHITECTURAL NEED FOR IMPROVEMENTS

- Limited **seating** options
- Need for more **shade**
- Lack of **accessibility** to the fountain
- Lack of **lighting**
- No/ limited access to **technology**



PLANTING NEED FOR IMPROVEMENTS

- Areas of **underutilized space**
- Plants in **poor condition**
- View to North hills **blocked**
- **Irrigation** issues
- **Broken lighting** amidst plantings



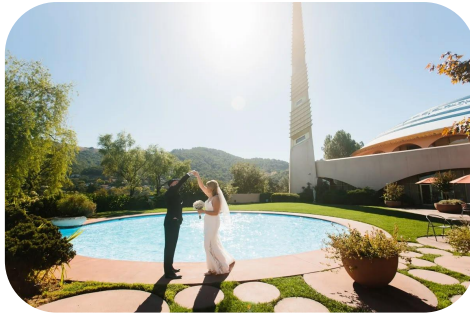
CURRENT USES

- Weddings
- Staff
- Tours



POTENTIAL USES

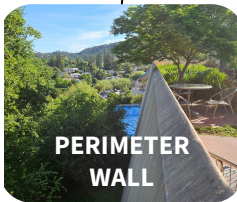
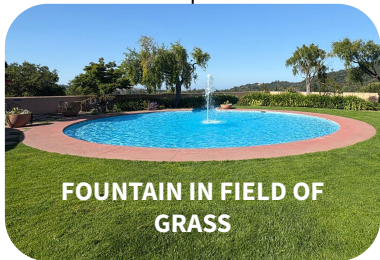
- Morning Fitness/ Mindfulness Space
- Social Media Destination
- Private Off-Hour Events
- Eames Institute Tour Route



SITE ANALYSIS



CHARACTER DEFINING FEATURES



VIEWS TO CELEBRATE

THE BUILDING



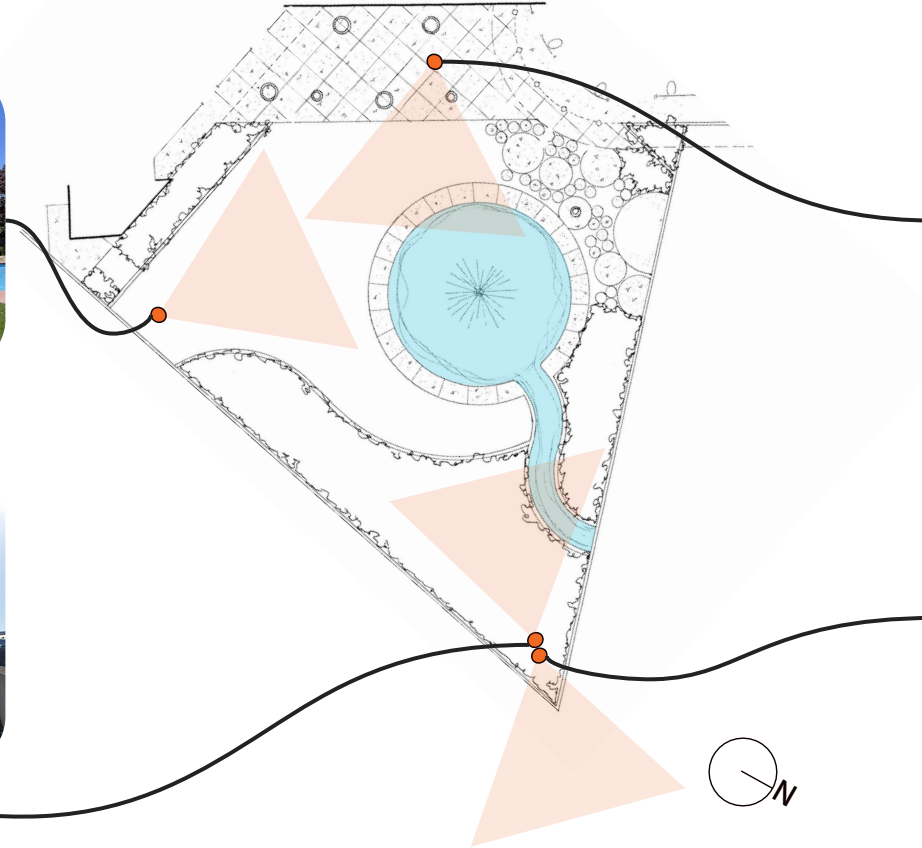
THE FOUNTAIN



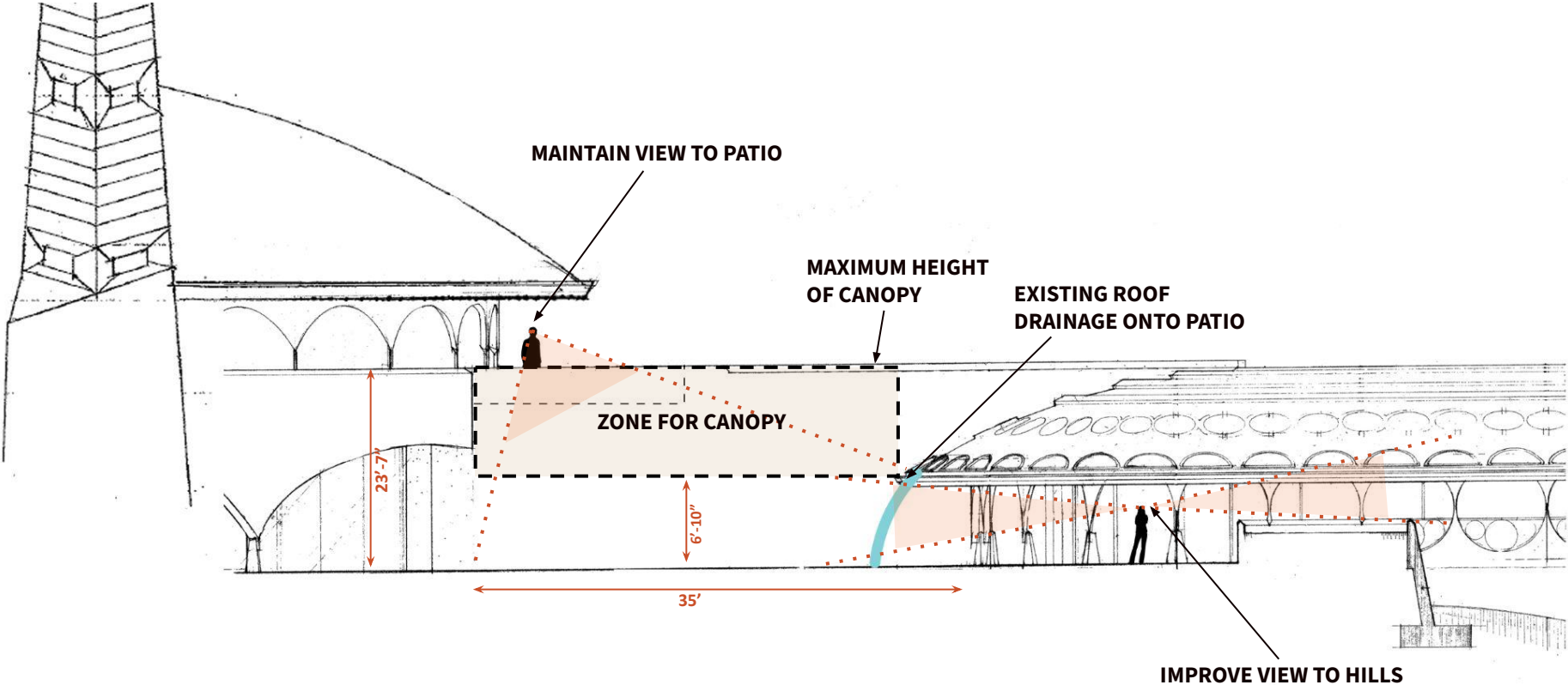
THE STREAM + SPIRE



THE HILLS



SECTION ANALYSIS DIAGRAM



The image shows the exterior of a building with a prominent blue and gold dome. The dome has a gold band with circular details. Below the dome is a white wall. In the foreground, there is an outdoor patio area with several tables and chairs, some under red umbrellas. A person is sitting at one of the tables. There are also some trees and a grassy area in the foreground. A white banner with the text 'ARCHITECTURAL IMPROVEMENT GUIDELINES' is overlaid on the image.

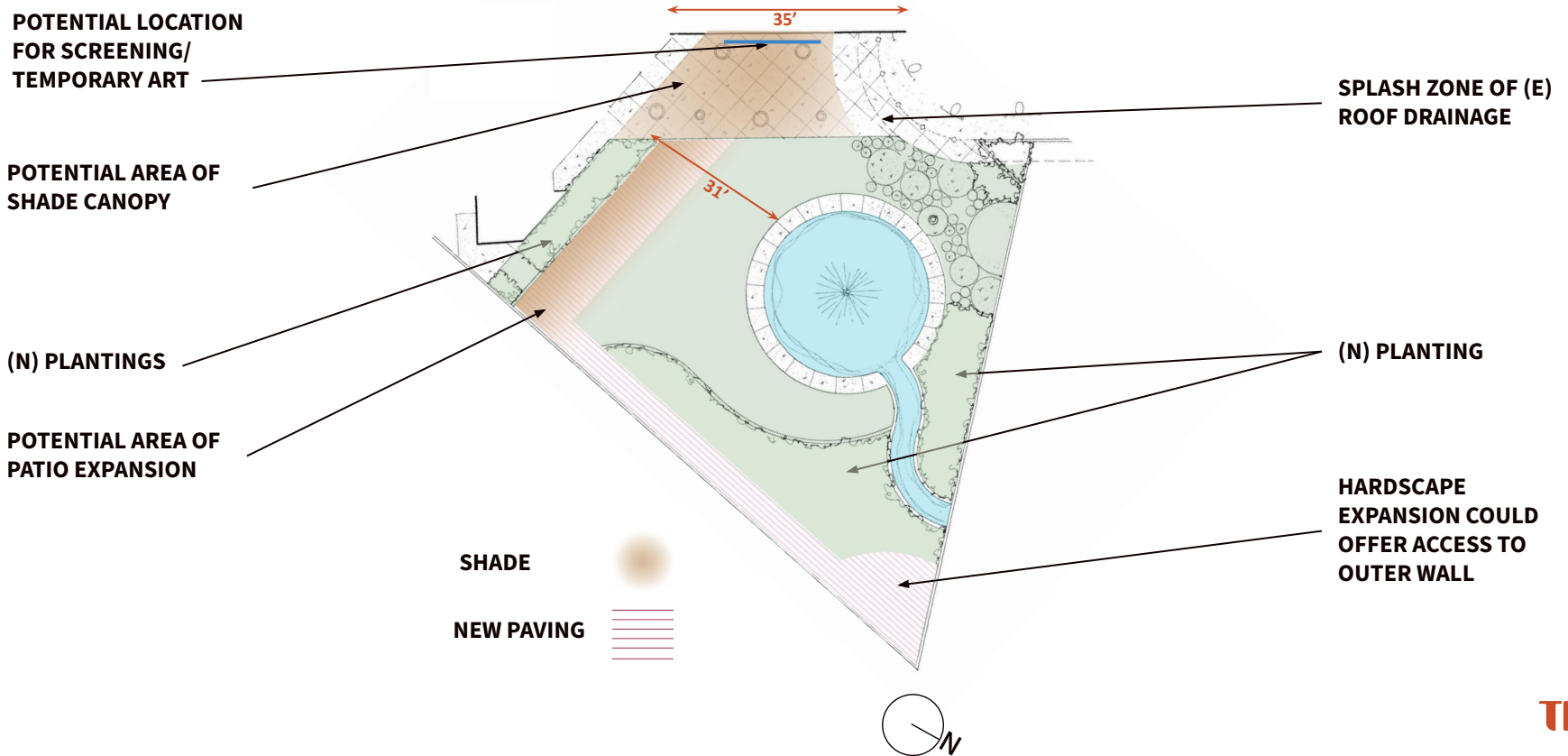
ARCHITECTURAL IMPROVEMENT GUIDELINES

ARCHITECTURAL IMPROVEMENT GUIDELINES

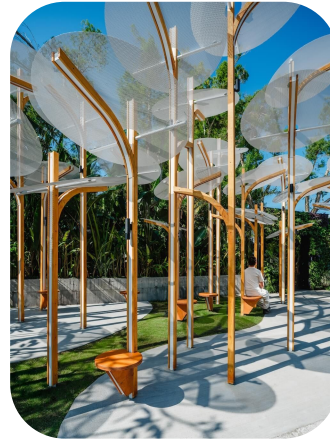
- Proposed elements **will not attach** to the existing building
- Shading structures will be **temporary** and **demountable**
- Lighting added to **enhance** the building and patio character defining features
- **Minimize impact to all views** both to and from the patio (including street level view)



ARCHITECTURAL OPPORTUNITIES DIAGRAM



SHADING/ LIGHTING CONCEPT PRECEDENTS



- Playful & dynamic lighting
- Uplighting at shade canopies

- “Tree-like” canopies
- Circular/ “Lilypad” canopies

A scenic view of a swimming pool in a backyard. In the foreground, a large, thick tree trunk is visible on the left side. The pool is filled with clear blue water and is surrounded by lush green plants and a concrete deck. In the background, there is a low wall and a hillside covered in dense green trees under a clear blue sky.

LANDSCAPE IMPROVEMENT GUIDELINES

LANDSCAPE IMPROVEMENT GUIDELINES

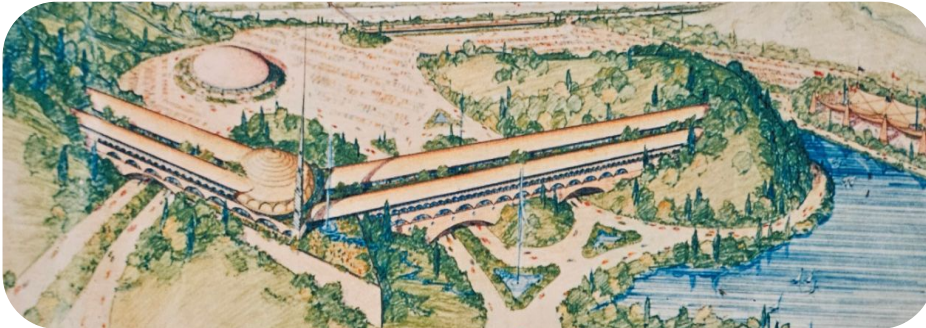
- **Honor** the original patio design
- Celebrate the siting - **integrated** into rolling hills
- Maintain the landscape expression as an **extension** of the architecture
- Emphasis on **accessibility, openness, and community gathering**
- Encourage relationship between **indoor** and **outdoor** planting



INDOOR PLANTING



HISTORIC IMAGE



ORIGINAL SKETCH



FAIRGROUNDS ORIGINAL SKETCH

PLANTING - CONCEPTS



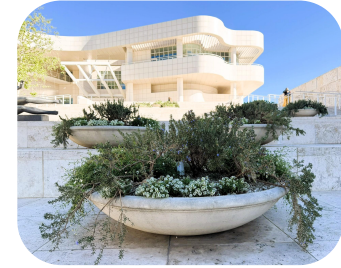
BRIGHT GEOMETRY



HILLSIDE GARDEN



VISTA



POTS



SUBDUED GEOMETRY



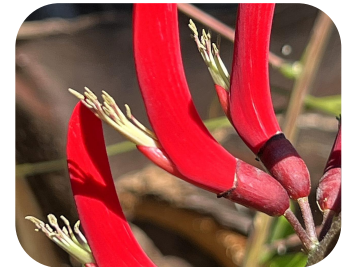
MASSING



LAWN



SEAT WALL PLANTER

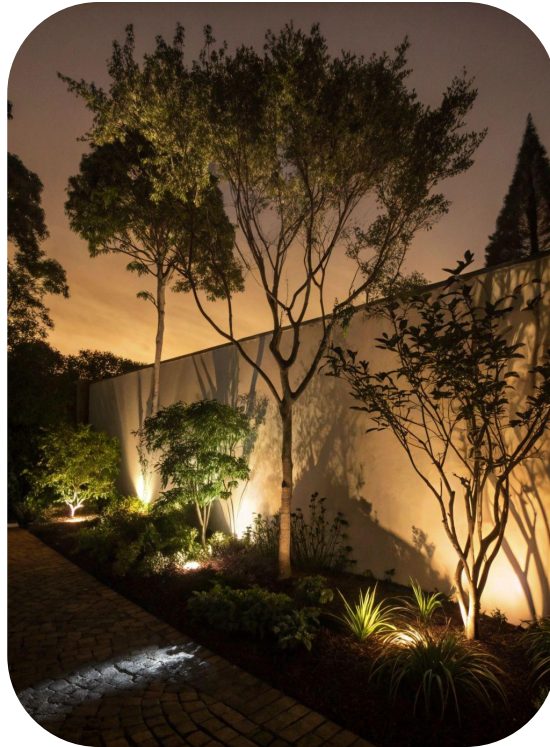


SPECIMEN FORM

LIGHTING - CONCEPTS



ORB LIGHTING



TREE & PLANT UPLIGHTING



ACCENTUATE BUILDING FEATURES

TEF

We craft places people love