

Civic Center Green Stormwater Infrastructure

FRANK LLOYD WRIGHT CONSERVANCY

June 17, 2026



Photo Credit: Jeff Wong



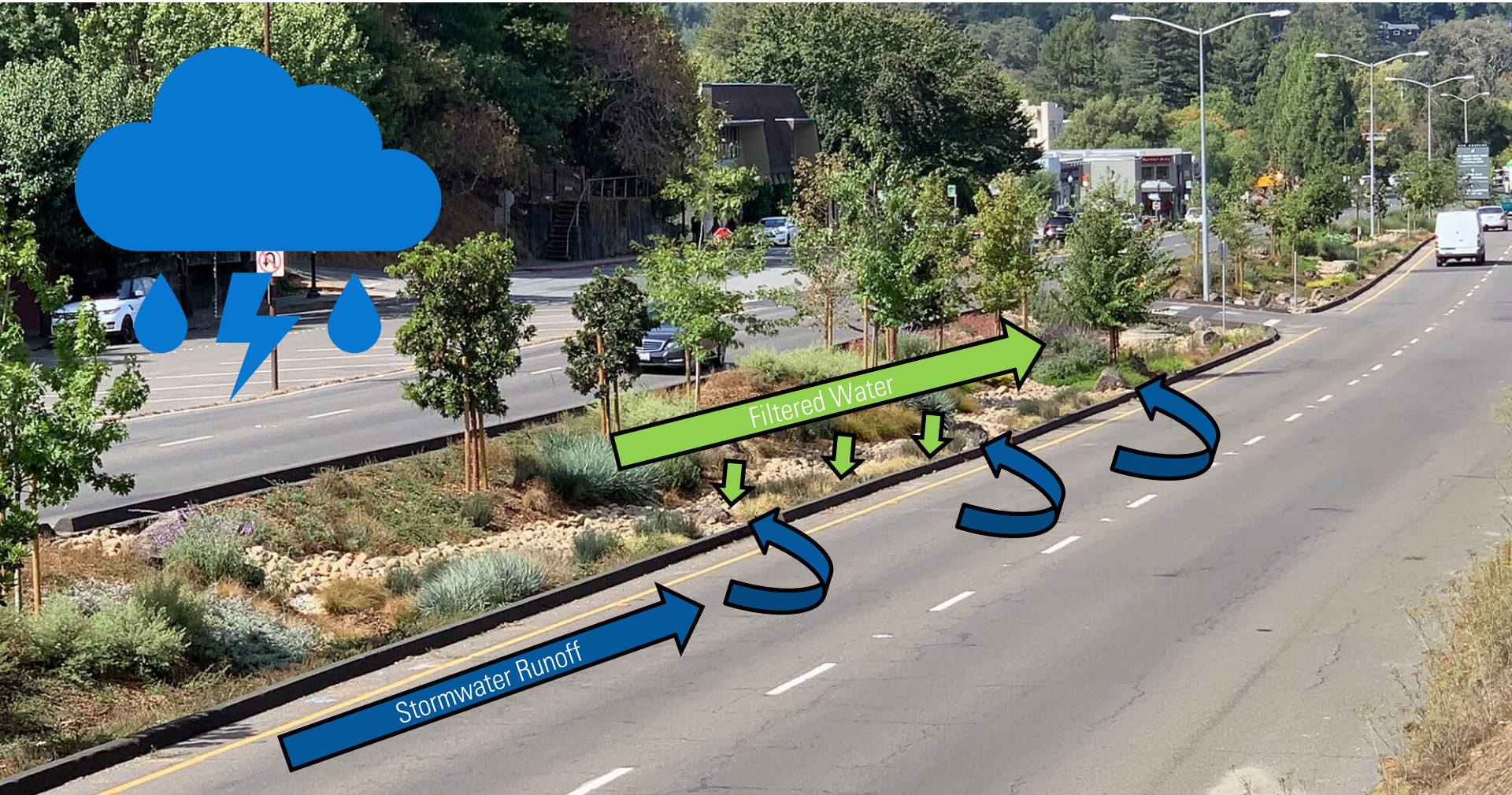
Department of Public Works
3501 Civic Center Dr
San Rafael, CA 94903

What is GSI: Slow it, Spread it, Sink it

- Slow stormwater runoff
 - alleviates downstream erosion
- Spread into gardens and landscape areas
 - beautify the campus
- Sink into the ground
 - recharge groundwater
- GSI improves water quality:
 - Breaks down common pollutants such as nutrients, bacteria, oil and grease



What is Green Stormwater Infrastructure?



Civic Center Master Design Guidelines- 2005

5.9 PARKING LOTS

- ✓ All existing parking lots on the Civic Center campus should be redesigned to incorporate bioswales to capture and treat run-off on-site wherever possible. These swales should run in between rows of parked cars and be planted with species specifically chosen for their water filtration abilities.
- ✓ Existing parking lots should also be densely planted with shade trees. Soil fertility and irrigation strategies must be devised in order to promote sustained health and growth of trees in such harsh environments.



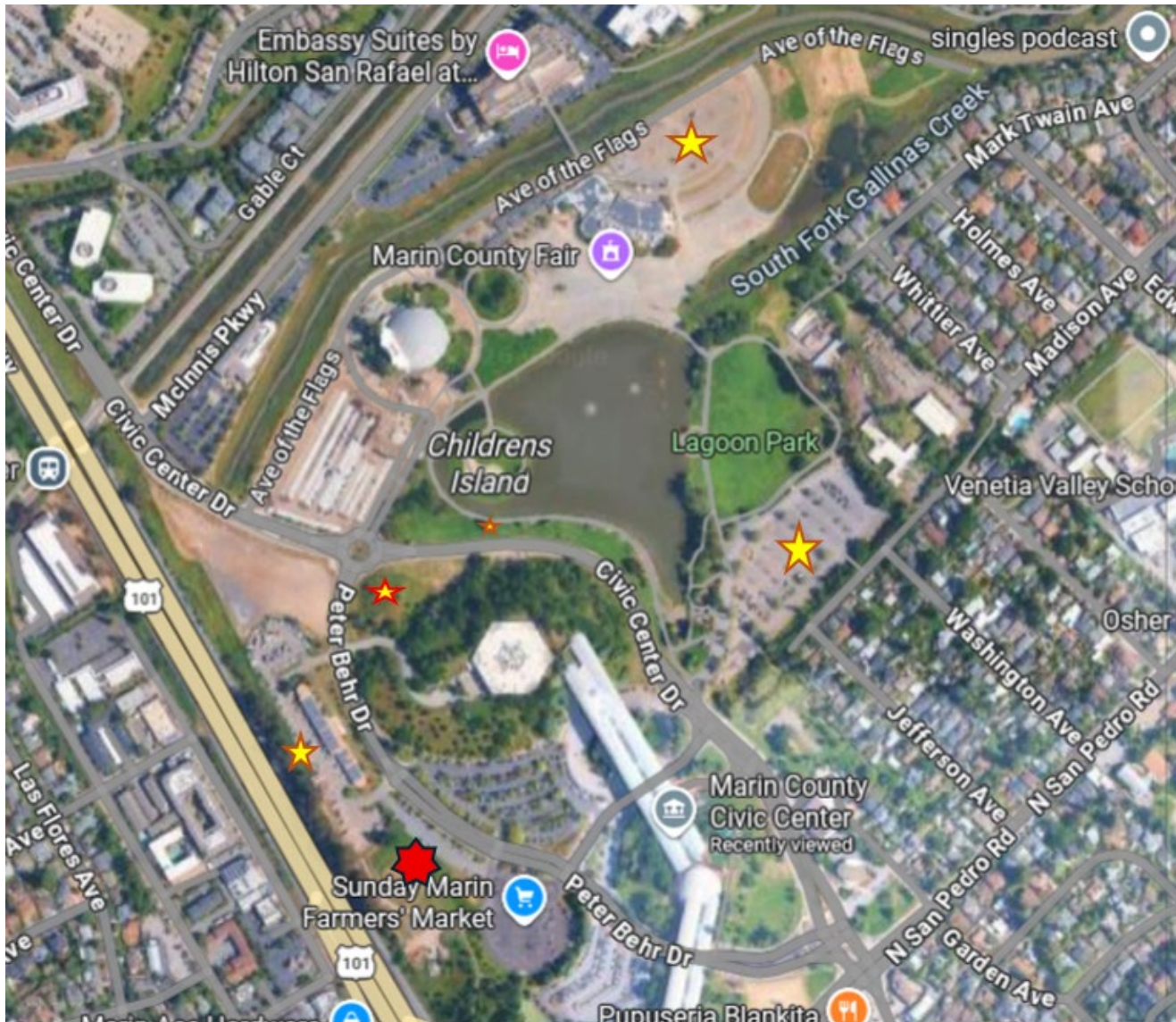
Civic Center Campus Project

- Phase 1 (Construction 2026) – Admin/Panhandle Lot
- Phase 2 & 3 (Construction 2027-28)
 - Jury Lot
 - Civic Center Dr (site 1 and 2)
 - Corp Yard
 - Marin Center





PHASE I- ADMIN/PANHANDLE



GSI SITE LOCATIONS



Phase 1



Phase 2-3



Department
 Presentation Title
 Date
 Website



Photo Credit: Jeff Wong



Questions?

LIZA DEFRAIN
LIZA.DEFRAIN@MARINCOUNTY.GOV
415-473-3202